

## Product datasheet for **DM182P**

### Cytokeratin 5 (KRT5) (+ KRT8) Mouse Monoclonal Antibody [Clone ID: C-50]

#### Product data:

Product Type:	Primary Antibodies
Clone Name:	C-50
Applications:	IF, IHC, IP, WB
Recommended Dilution:	<b>Western blot.</b> <b>Immunoprecipitation.</b> <b>Immunocytochemistry.</b> <b>Immunohistochemistry on Paraffin sections:</b> 10 µg/ml. <i>Positive control:</i> Human prostate.
Reactivity:	Human, Porcine, Mouse, Rat, Hamster, Bovine, Sheep, Mammalian
Host:	Mouse
Isotype:	IgG1
Clonality:	Monoclonal
Immunogen:	Cytoskeleton preparation from HeLa cells
Specificity:	The antibody C-50 reacts with Cytokeratin peptides 5 and 8 (58 and 45 kDa). <b>Positive Species:</b> Human, Porcine, Mouse, Rat, Hamster, Bovine, Sheep, Canine. <b>Negative Species:</b> Chicken, Xenopus. Other not tested
Formulation:	PBS, pH~7.4 with 15 mM Sodium Azide State: Purified State: Liquid purified IgG fraction (> 95% by SDS-PAGE)
Concentration:	lot specific
Purification:	Protein-A Affinity Chromatography
Conjugation:	Unconjugated
Storage:	Store the antibody undiluted at 2-8°C for one month or (in aliquots) at -20°C for longer. Avoid repeated freezing and thawing.
Stability:	Shelf life: one year from despatch.
Gene Name:	keratin 5
Database Link:	<a href="#">Entrez Gene 110308 Mouse</a> <a href="#">Entrez Gene 369017 Rat</a> <a href="#">Entrez Gene 3852 Human</a> <a href="#">P13647</a>



[View online »](#)

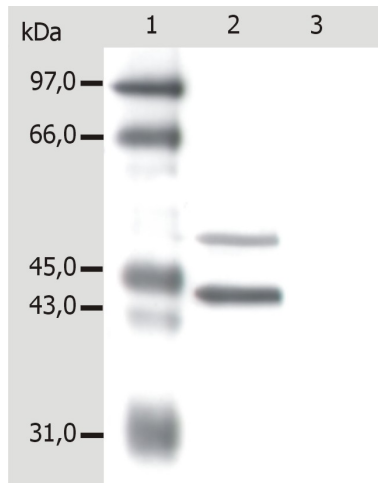
**Background:**

Cytokeratins are a member of intermediate filaments subfamily represented in epithelial tissues. Cytokeratins are a subfamily of intermediate filaments and characterized by remarkable biochemical diversity. Cytokeratins are represented in epithelial tissues by at least 20 different polypeptides, molecular weight between 40 kDa and 68 kDa. The individual cytokeratin polypeptides are designated 1 to 20 and divided into the type I (acidic cytokeratins 9-20) and type II (basic to neutral cytokeratins 1-8) families.

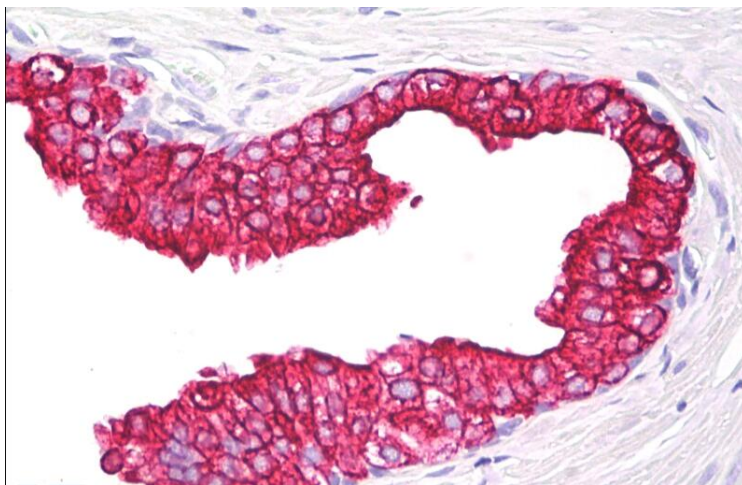
**Synonyms:**

KRT5, Cytokeratin-5, Keratin-5, Keratin 5, CK5, K5

**Product images:**



Western Blotting analysis of whole cell lysate of MCF-7 human breast adenocarcinoma cell line. Lane 1: MW standard; Lane 2: immunostaining with anti-cytokeratin 5+18; Lane 3: immunostaining with Isotype mouse IgG1 control



Immunohistochemistry staining of human prostate (paraffin section) using anti-cytokeratin 5+18.