

Product datasheet for **DM164R**

CD61 (ITGB3) Mouse Monoclonal Antibody [Clone ID: Y2/51]

Product data:

Product Type:	Primary Antibodies
Clone Name:	Y2/51
Applications:	FC
Recommended Dilution:	Flow Cytometry: Use 10 µl of neat antibody to label 10e6 cells in 100 µl.
Reactivity:	Human
Host:	Mouse
Isotype:	IgG1
Clonality:	Monoclonal
Immunogen:	PHA stimulated peripheral blood cells. Spleen cells from immunised Balb/c mice were fused with cells of the NS1 myeloma cell line.
Specificity:	This antibody recognises CD61.
Formulation:	PBS, pH 7.4 containing 0.09% Sodium Azide as preservative and 1% BSA as stabilizer. Label: PE State: Lyophilized purified IgG fraction. Label: R. Phycoerythrin (RPE)
Reconstitution Method:	Restore with 1.0 ml distilled water.
Concentration:	lot specific
Purification:	Affinity Chromatography on Protein G.
Conjugation:	PE
Storage:	Store the antibody undiluted at 2-8°C. DO NOT FREEZE! This product is photosensitive and should be protected from light.
Stability:	Shelf life: one year from despatch.
Gene Name:	integrin subunit beta 3
Database Link:	Entrez Gene 3690 Human P05106



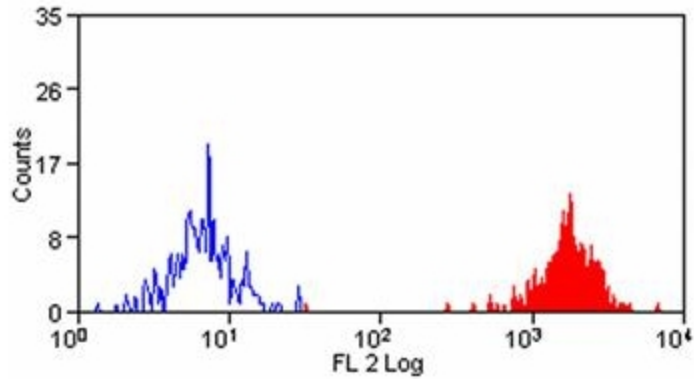
[View online »](#)

Background:

CD61 is a 105kD glycoprotein, which is also known as integrin beta 3 chain. This molecule associates with either the alpha IIb integrin (CD41) or the alpha V integrin (CD51) at the cell surface. CD61 is expressed on platelets and megakaryocytes in association with CD41, and on endothelial cells, monocytes, platelets and osteoclasts in association with CD51. CD61 is a receptor for fibrinogen, fibronectin, vWF, vitronectin and thrombospondin.

Synonyms:

Integrin beta-3, GP3A, GPIIIa

Product images:

Peripheral Human Monocytes stained with
Mouse Anti Human CD61-RPE