

## Product datasheet for **DM127**

### Cytokeratin 17 (KRT17) Mouse Monoclonal Antibody [Clone ID: Ks17.E3]

#### Product data:

Product Type:	Primary Antibodies
Clone Name:	Ks17.E3
Applications:	IHC, WB
Recommended Dilution:	Immunohistochemistry on Paraffin Embedded Sections: diluted of 1/25-1/50 in an ABC method (30 minutes at room temperature). Formalin fixed paraffin embedded tissue sections require high temperature antigen unmasking with 10 mM citrate buffer, pH 6.0 prior to immunostaining. Positive Control: Skin.
Reactivity:	Human, Rat
Host:	Mouse
Isotype:	IgG2b
Clonality:	Monoclonal
Immunogen:	Cytoskeletal fraction of rat colon epithelium.
Specificity:	This antibody is specific to 46 kD Cytokeratin protein designated Cytokeratin 17. It reacts with basal cells in complex epithelia and reacts strongly with squamous cell carcinomas. Cellular Localization: Cytoplasmic
Formulation:	State: Supernatant State: Liquid Supernatant containing Sodium Azide as preservative.
Conjugation:	Unconjugated
Storage:	Store the antibody undiluted at 2-8°C.
Stability:	Shelf life: one year from despatch.
Gene Name:	keratin 17
Database Link:	<a href="#">Entrez Gene 3872 Human Q04695</a>

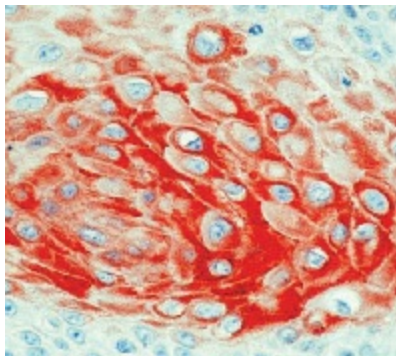
[View online »](#)

**Background:**

Cytokeratins are a subfamily of intermediate filament proteins and are characterized by a remarkable biochemical diversity, represented in human epithelial tissues by at least 20 different polypeptides. They range in molecular weight between 40 kDa and 68 kDa and isoelectric pH between 4.9 - 7.8. The individual human cytokeratins are numbered 1 to 20. The various epithelia in the human body usually express cytokeratins which are not only characteristic of the type of epithelium, but also related to the degree of maturation or differentiation within an epithelium. Cytokeratin subtype expression patterns are used to an increasing extent in the distinction of different types of epithelial malignancies. The cytokeratin antibodies are not only of assistance in the differential diagnosis of tumors using immunohistochemistry on tissue sections, but are also a useful tool in cytopathology and flow cytometric assays.

**Synonyms:**

Cytokeratin-17, Keratin-17, Keratin 17, KRT17, CK17, K17

**Product images:**


Formalin fixed paraffin embedded human squamous cell carcinoma stained with Cytokeratin 17 antibody DM127