

Product datasheet for **DM123**

Cytokeratin 20 (KRT20) Mouse Monoclonal Antibody [Clone ID: Ks20.8]

Product data:

Product Type:	Primary Antibodies
Clone Name:	Ks20.8
Applications:	IHC, WB
Recommended Dilution:	Immunohistochemistry on Paraffin Sections: Use a dilution of 1/25-1/50 in an ABC method (30 minutes at room temperature). Formalin fixed paraffin embedded tissue sections require high temperature antigen unmasking with 10 mM Citrate buffer, pH 6.0 prior to immunostaining. Positive Control: Skin.
Reactivity:	Human
Host:	Mouse
Isotype:	IgG2a
Clonality:	Monoclonal
Immunogen:	Cytokeratins isolated from human micro dissected villi of human duodenal mucosa.
Specificity:	This antibody reacts with cytokeratin polypeptide of 46 kD in immunoblott analyses. Cellular Localization: Cytoplasmic.
Formulation:	State: Purified State: Liquid purified Ig fraction containing Sodium Azide as preservative.
Conjugation:	Unconjugated
Storage:	Store the antibody undiluted at 2-8°C.
Stability:	Shelf life: one year from despatch.
Gene Name:	keratin 20
Database Link:	Entrez Gene 54474 Human P35900



[View online »](#)

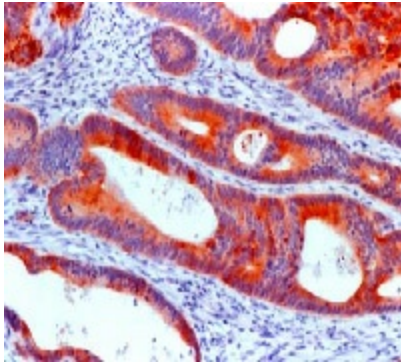
Background:

Cytokeratin 20 is a 46 kDa intermediate filament protein whose expression is restricted primarily to gastric and intestinal epithelium, urothelium, and Merkel cells. This antibody is highly specific to cytokeratin 20 and shows no cross-reactivity with other IFPs. Cytokeratin 20 is a unique type I keratin that is expressed in adenocarcinomas of the colon stomach, pancreas and bile system. It is also expressed in mucinous ovarian tumors, transitional cell carcinomas of the urinary tract, and Merkel cell carcinomas.

This antibody is essentially non-reactive in squamous cell carcinomas and adenocarcinomas of the breast, lung, and endometrium, non-mucinous tumors of the ovary, and small cell carcinomas. This antibody is often used in conjunction with CK7 and other antibodies to distinguishing colon carcinomas (CK20+), from ovarian, pulmonary, and breast carcinomas.

Synonyms:

Cytokeratin 20, Keratin-20, KRT20, CK20, K20, Protein IT

Product images:

Formalin fixed paraffin embedded human colon carcinoma stained with Cytokeratin 20 antibody DM123/DM123-05