

## Product datasheet for **DM1229**

### CD66b (CEACAM8) Mouse Monoclonal Antibody [Clone ID: GM2H6]

#### Product data:

|                       |  |
|-----------------------|--|
| Product Type:         | Primary Antibodies   |
| Clone Name:           | GM2H6  |
| Applications:         | ELISA, FC  |
| Recommended Dilution: | <b>Cell based ELISA</b> with intact, transiently transfected cells: 1/200-1/400.<br><b>Flow cytometry:</b> 1.2 µg/10 <sup>6</sup> cells. |
| Reactivity:           | Human  |
| Host:                 | Mouse  |
| Isotype:              | IgG1   |
| Clonality:            | Monoclonal   |
| Immunogen:            | Genetic immunisation with cDNA encoding Human CEACAM8.   |
| Specificity:          | Recognizes CEACAM8 (CD66b/NCA-95).   |
| Formulation:          | Phosphate buffered saline, pH 7.2 without preservatives<br>State: Purified<br>State: Liquid purified Ig fraction                         |
| Concentration:        | lot specific   |
| Purification:         | Affinity Chromatography on Protein G   |
| Conjugation:          | Unconjugated   |
| Storage:              | Store undiluted at 2-8°C for one month or (in aliquots) at -20°C for longer.<br>Avoid repeated freezing and thawing.                     |
| Stability:            | Shelf life: one year from despatch.  |
| Gene Name:            | carcinoembryonic antigen related cell adhesion molecule 8  |
| Database Link:        | <a href="#">Entrez Gene 1088 Human P31997</a>  |



[View online »](#)

**Background:**

CEA-related cell adhesion molecule 8 (CEACAM8, CD66b) belongs to the carcinoembryonic antigen (CEA) gene family (1,3,4). It encodes a glycosylphosphatidylinositol (GPI)-linked glycoprotein with a Mr of 95,000 which is expressed in cells of the granulocyte-lineage. It is expressed in neutrophils and eosinophils and is characterized as a granulocyte-specific activation antigen. CEACAM8 could serve as a marker for granulocyte activities (2). Like all members of the CEA family, it consists of a single N domain, with structural homology to the immunoglobulin variable domains, followed by two immunoglobulin constant-like A and B do-mains.

**Synonyms:**

CD67, CGM6, NCA-95

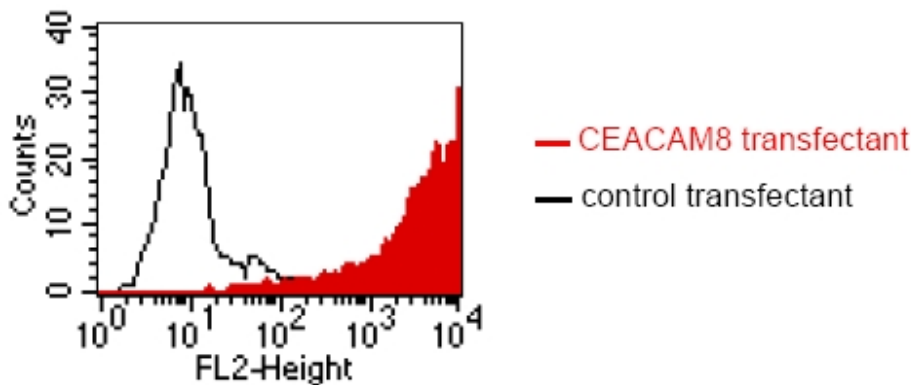
**Product images:**


Figure.1 : FACS analysis of BOSC23 cells using GM2H6 antibody. BOSC23 cells were transiently transfected with an expression vector encoding either CEACAM8 (Red curve) or an irrelevant protein (control transfectant). Binding of GM-0512 was detected with a PE conjugated secondary antibody. A positive signal was obtained only with CEACAM8 transfected cells.

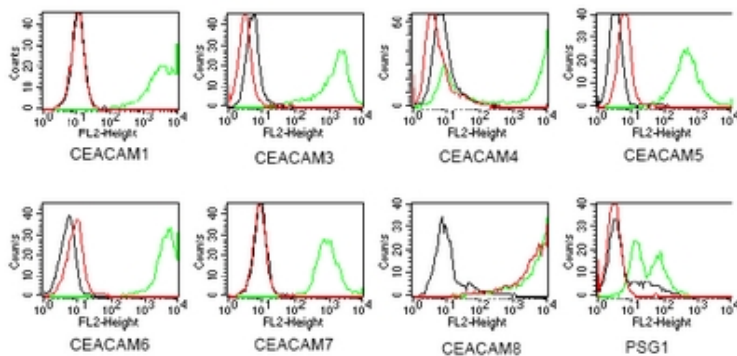
**Antibody cross-reactivity with members of the CEA family**


Figure 2: BOSC23 cells were transiently transfected with expression vectors containing either the cDNA of CEACAM1, CEACAM3-8 or PSG. The latter expressed as a membrane bound fusion protein. Expression of the constructs was tested with monoclonal antibodies known to recognize the corresponding proteins (CEACAM1, 3, 4, 5 and 6: D14HD11; CEACAM7: BAC2; CEACAM8: Tet2; PSG: Brifred GM-2H6 was tested on all CEACAM transfectants. A positive signal was obtained only with CEACAM8 transfected cells (Red curve).