

Product datasheet for **DM1225**

Prostate Specific Antigen (KLK3) Mouse Monoclonal Antibody [Clone ID: LT-3D2]

Product data:

Product Type:	Primary Antibodies
Clone Name:	LT-3D2
Applications:	ELISA, FC, WB
Recommended Dilution:	Flow cytometry: 1.2 µg/10 ⁶ cells. Cell based ELISA with intact, transiently transfected cells: 1/200-1/400.
Reactivity:	Human
Host:	Mouse
Isotype:	IgG1
Clonality:	Monoclonal
Immunogen:	Genetic immunisation with cDNA encoding Human PSA
Specificity:	Recognizes Human PSA (glandular Kallikrein 3). Other species not tested.
Formulation:	Phosphate buffered saline, pH 7.2 State: Purified State: Liquid purified Ig fraction
Concentration:	lot specific
Purification:	Affinity Chromatography on Protein G
Conjugation:	Unconjugated
Storage:	Store the antibody undiluted at 2-8°C for one month or (in aliquots) at -20°C for longer. Avoid repeated freezing and thawing.
Stability:	Shelf life: one year from despatch.
Gene Name:	kallikrein related peptidase 3
Database Link:	Entrez Gene 354 Human P07288



[View online »](#)

Background: Prostate specific antigen (PSA) belongs to the kallikrein gene family. It is a single-chain glycoprotein with a molecular mass of about 33 kD which is produced by prostate epithelial cells. It is secreted in the seminal plasma and is responsible for liquefaction of the seminal coagulum (1,2). PSA is present in small quantities in the serum of healthy males, and is often elevated in the presence of prostate cancer and in other prostate disorders. It is one of the most useful tumour markers because of its tissue specificity. It is thus widely used for screening, diagnosis, and monitoring patients with prostate cancer (3).

Synonyms: Prostate-specific antigen, Semenogelase, Gamma-seminoprotein, P-30 antigen

Note: **SDS-PAGE analysis of LT-3D2:** The antibody was purified by protein G affinity chromatography from cell culture supernatants and verified by SDS-Page (Figure.2).

Protein Families: Druggable Genome, Protease, Secreted Protein

Protein Pathways: Pathways in cancer, Prostate cancer

Product images:

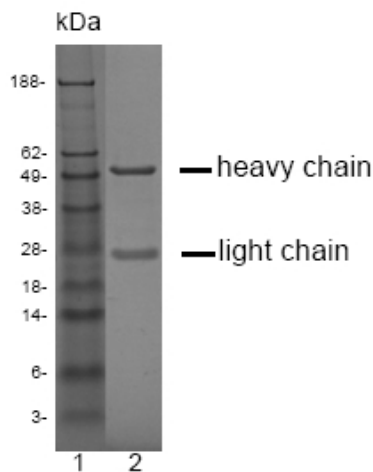


Figure 2. Crified LT-3D2 monoclonal antibody. Lane 1: Molecular Weight marker, Lane 2: purified LT-3D2 antibody. Proteins were separated by SDS-PAGE and stained with RAPID Stain™ Reagent.

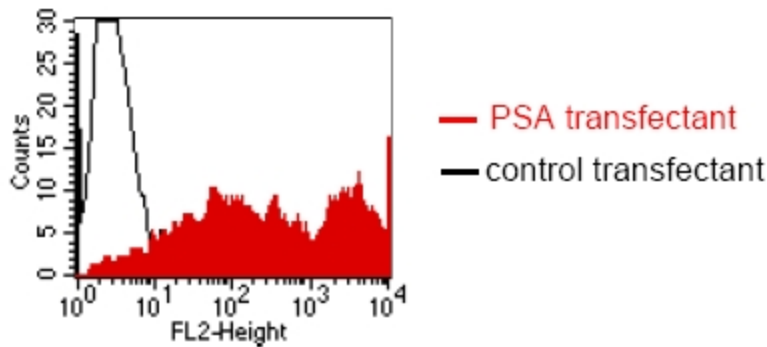


Figure.1: FACS analysis of BOSC23 cells using LT-3D2 antibody. BOSC23 cells were transiently transfected with an expression vector encoding either PSA (red curve) or an irrelevant protein (Control transfectant: black curve). Binding of LT-3D2 was detected with a PE-conjugated secondary antibody. A positive signal was obtained only with PSA trans-fected cells.