

Product datasheet for **DM1220**

Chromogranin A (CHGA) Mouse Monoclonal Antibody [Clone ID: NJ-5C9]

Product data:

Product Type:	Primary Antibodies
Clone Name:	NJ-5C9
Applications:	ELISA, FC, WB
Recommended Dilution:	Flow cytometry: 1.2 µg/10e6 cells. ELISA: 1/200-1/400. Cell based ELISA with intact, transiently transfected cells: 1/200-1/400.
Reactivity:	Human, Mouse
Host:	Mouse
Isotype:	IgG1
Clonality:	Monoclonal
Immunogen:	Genetic immunisation with cDNA encoding CGA
Specificity:	Recognizes Chromogranin A (CGA).
Formulation:	Phosphate buffered saline, pH 7.2 State: Purified State: Liquid purified Ig fraction.
Concentration:	lot specific
Purification:	Affinity Chromatography on Protein G.
Conjugation:	Unconjugated
Storage:	Store the antibody undiluted at 2-8°C for one month or (in aliquots) at -20°C for longer. Avoid repeated freezing and thawing.
Stability:	Shelf life: one year from despatch.
Gene Name:	chromogranin A
Database Link:	Entrez Gene 12652 Mouse Entrez Gene 1113 Human P10645



[View online »](#)

Background:

Chromogranin A (CgA) is a 49 kDa protein which is a member of the granin/secretogranin family of acidic glycoproteins. It is specifically expressed in all endocrine and neuroendocrine cells and plays multiple roles in the process of regulated secretion of peptide hormones and neurotransmitters (1). Owing to its over-expression in several tumors of neuroendocrine origin, CgA is of diagnostic value in classical endocrine, in hormone-negative and in neuroendocrine tumors (2).

Synonyms:

Chromogranin-A, CgA, CHGA, SP-I

Protein Families:

Druggable Genome, Secreted Protein

Product images:

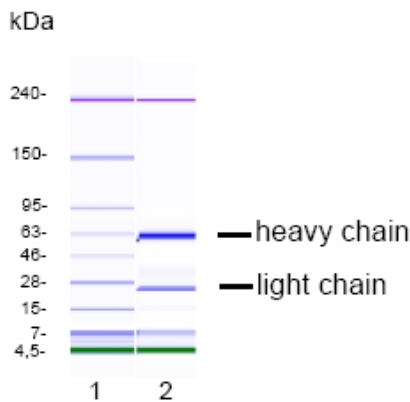


Figure 2. SDS-PAGE analysis of purified NJ-5C9 antibody. Lane 1: Molecular weight marker, Lane 2: 2ug of purified NJ-5C9 antibody. Proteins were separated by CGE (Capillary Gel Electrophoresis, Agilent 2100 Bioanalyzer). Internal Control bands (240 kDa / 7 kDa / 4.5 kDa).

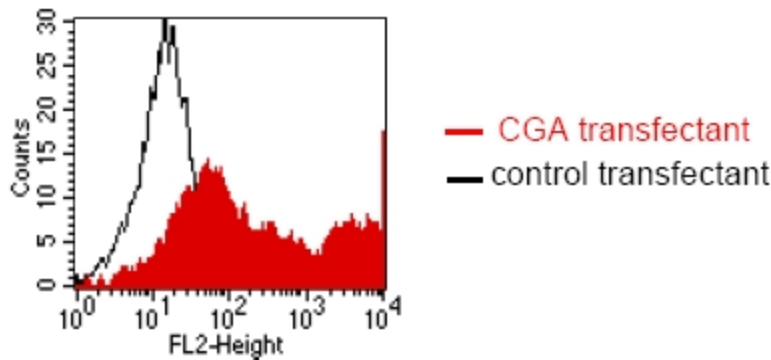


Figure.1: FACS analysis of BOSC23 cells using NJ-5C9. BOSC23 cells were transiently transfected with an expression vector encoding either CGA (red curve) or an irrelevant protein (Control transfectant: black curve). Binding of NJ-5C9 was detected with a PE-conjugated secondary antibody. A positive signal was obtained only with CGA transfected cells.