

Product datasheet for **DM1210**

IL13 receptor alpha 1 (IL13RA1) Mouse Monoclonal Antibody [Clone ID: GM1C8]

Product data:

Product Type:	Primary Antibodies
Clone Name:	GM1C8
Applications:	ELISA, FC, IF
Recommended Dilution:	Flow cytometry: 1.2 µg/10 ⁶ cells. The antibody is routinely tested by on BOSC cells transiently transfected with an IL-13Rα1 expression vector. Cell based ELISA with intact, transiently transfected cells: 1/200-1/400. It is expected that the antibody will be suited for all applications where recognition of the native protein is required.
Reactivity:	Human
Host:	Mouse
Isotype:	IgG1
Clonality:	Monoclonal
Immunogen:	cDNA of the human IL-13Rα1 chain extracellular domain (U62858).
Specificity:	Clone GM1C8 recognises IL-13Rα1 transiently expressed on the cell surface of transfected BOSC cells as well as the native protein on monocytes (W. Luttmann, unpublished data). Selection: Based on recognition of the complete native protein expressed on transfected mammalian cells.
Formulation:	PBS, pH 7.2 State: Purified State: Liquid purified IgG fraction Preservative: 0.01% Sodium Azide
Concentration:	lot specific
Purification:	Protein G chromatography
Conjugation:	Unconjugated
Storage:	Store undiluted at 2-8°C for one month or (in aliquots) at -20°C for longer. Avoid repeated freezing and thawing.
Stability:	Shelf life: one year from despatch.



[View online »](#)

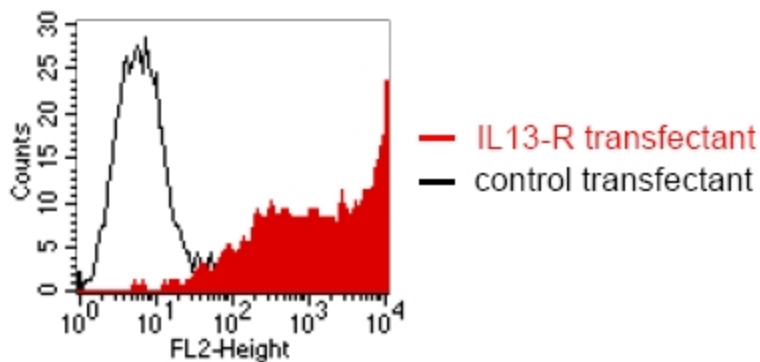
Gene Name: interleukin 13 receptor subunit alpha 1

Database Link: [Entrez Gene 3597 Human P78552](#)

Background: Interleukin 13 (IL-13) is a T cell derived cytokine involved in the regulation of inflammatory and immune responses. IL-13R α 1 together with IL-4R α forms a functional receptor for both IL-4 and IL-13, which is why these two cytokines share many of their biological activities. The receptor is found on human B cells, monocytes and endothelial cells. However, no functional receptor is expressed on T cells, which explains why IL-13, in contrast to IL-4, fails to induce TH2-cell differentiation.

Synonyms: Interleukin-13 receptor alpha-1 chain, IL-13R-alpha-1, IL-13RA-1, IL13R, IL13RA, IL13 receptor alpha, CT19

Product images:



FACS analysis of BOSC23 cells using clone GM-1C8 antibody. BOSC23 cells were transiently transfected with an expression vector encoding either IL13-R (Red curve) or an irrelevant protein (Control transfectant: black curve). Binding of GM-1C8 was detected with a PE-conjugated secondary antibody. A positive signal was obtained only with IL13-R transfected cells.