

Product datasheet for **DM1203**

CD66c/e Mouse Monoclonal Antibody [Clone ID: MUS]

Product data:

Product Type:	Primary Antibodies
Clone Name:	MUS
Applications:	ELISA, FC, IF, IHC, WB
Recommended Dilution:	Flow Cytometry: 1.2 µg/10 ⁶ cells. ELISA: 1/200-1/400. Cell based ELISA with intact, transiently transfected cells: 1/200. Western blot: 4 µg/ml. Immunohistochemistry: 1-2 µg/10 ⁶ cells (on Cryosections).
Reactivity:	Human
Host:	Mouse
Isotype:	IgG1
Clonality:	Monoclonal
Immunogen:	MUS was generated by immunisation of BALB/c mice with CEA partially purified from a perchloric acid extract from liver metastases of colonic tumors (3).
Specificity:	This antibody reacts to CD66c/e.
Formulation:	Phosphate buffered saline, pH 7.2 State: Purified State: Liquid purified IgG fraction
Concentration:	lot specific
Purification:	Affinity Chromatography on Protein G
Conjugation:	Unconjugated
Storage:	Store undiluted at 2-8°C for one month or (in aliquots) at -20°C for longer. Avoid repeated freezing and thawing.
Stability:	Shelf life: one year from despatch.



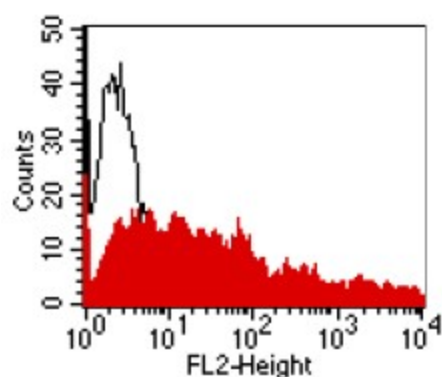
[View online »](#)

Background:

CEA-related cell adhesion molecules (CEACAM) belong to the carcinoembryonic antigen (CEA) family (1). The CEA family proteins belong to the immunoglobulin (Ig) superfamily and are composed of one Ig variable-like (IgV) and a varying number (0-6) of Ig constant-like (IgC) domains. CEACAM molecules are membrane-bound either via a transmembrane domain or a glycosyl phosphatidyl inositol (GPI) anchor. CEACAM molecules are differentially expressed in epithelial cells or in leucocytes. Over-expression of CEA/CEACAM5 in tumors of epithelial origin is the basis of its wide-spread use as a tumor marker (2). CEACAM6 expression is strongly upregulated already during early stages of adenocarcinoma formation (3). The function of CEA family members varies widely: they function as cell adhesion molecules, tumor suppressors, regulators of lymphocyte and dendritic cell activation, receptors of *Neisseria* species and other bacteria (1).

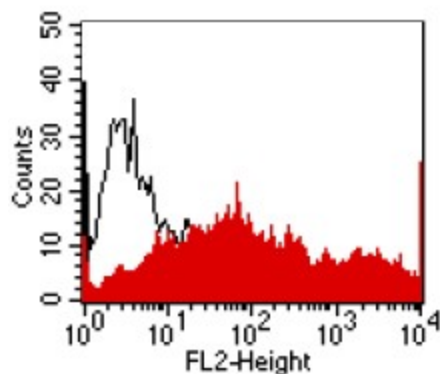
Synonyms:

CEACAM5, Carcinoembryonic antigen, CEA, Meconium Antigen 100, Normal Cross-reacting Antigen, CEACAM6, NCA

Product images:


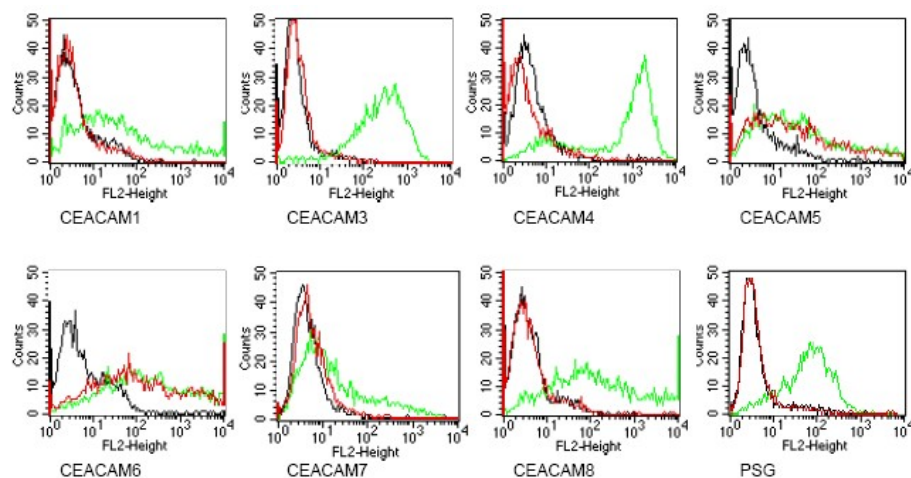
— CEACAM5 transfectant
— control transfectant

Fig.1: FACS analysis of BOSC23 cells using MUS Cat.# DM1203. BOSC23 cells were transiently transfected with an expression vector encoding either CEACAM5 (red curve) or an irrelevant protein (control transfectant). Binding of MUS was detected with a PE conjugate



— CEACAM6 transfectant
— control transfectant

Fig.2: FACS analysis of BOSC23 cells using MUS DM1203. BOSC23 cells were transiently transfected with an expression vector encoding either CEACAM6 (red curve) or an irrelevant protein (control transfectant). Binding of MUS was detected with a PE conjugate



BOSC cells were transiently transfected with expression vectors containing either the cDNA of CEACAM1, 3, 5, 6, 7, 8 or a recombinant transmembrane-anchored PSG1 fusion protein. Recognition of CEACAM4 was tested on CHO cells stably transfected with a CEACAM4