

Product datasheet for **DM1200**

LOC102723996 Mouse Monoclonal Antibody [Clone ID: GM13C1]

Product data:

Product Type:	Primary Antibodies
Clone Name:	GM13C1
Applications:	ELISA, FC, WB
Recommended Dilution:	Flow Cytometry: 1.2 µg/10 ⁶ cells. Cell based ELISA with intact, transiently transfected cells: 1/200-1/400.
Reactivity:	Human
Host:	Mouse
Isotype:	IgG1
Clonality:	Monoclonal
Immunogen:	Genetic immunisation with cDNA encoding Human ICOSL (Extracellular Domain).
Specificity:	This antibody recognizes Human CD275 / ICOS Ligand. Other species not tested.
Formulation:	Phosphate buffered saline, pH 7.2 State: Purified State: Liquid purified Ig fraction from Cell Culture Supernatant
Concentration:	lot specific
Purification:	Affinity Chromatography on Protein G
Conjugation:	Unconjugated
Storage:	Store undiluted at 2-8°C for one month or (in aliquots) at -20°C for longer. Avoid repeated freezing and thawing.
Stability:	Shelf life: one year from despatch.
Gene Name:	ICOS ligand
Database Link:	Entrez Gene 102723996 Human O75144



[View online »](#)

Background:

Inducible co-stimulator ligand (ICOSL) is a specific ligand on antigen-presenting cells and cells of the peripheral tissue that binds to the inducible co-stimulator receptor (ICOS)(1). ICOS belongs to the CD28/CD152 receptor family that regulates T-cell activation and function. ICOSL is expressed on monocytes, dendritic cells and B cells and can be induced by inflammatory stimuli in peripheral tissue. Binding to ICOSL delivers a co-stimulatory signal for T cell proliferation and cytokine secretion (2,3).

Synonyms:

B7 homolog 2, B7-like protein GI50, B7-related protein 1, ICOSLG, B7H2, B7RP1, B7RP-1, ICOSL, KIAA0653

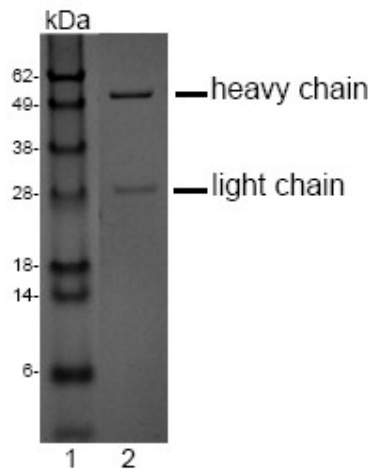
Product images:


Fig.2: SDS-PAGE analysis of purified GM-13C1 monoclonal antibody. Lane 1: molecular weight marker, Lane 2: 2 ug of purified GM-13C1 antibody. Proteins were separated by SDS-PAGE and stained with RAPID Stain™ Reagent.

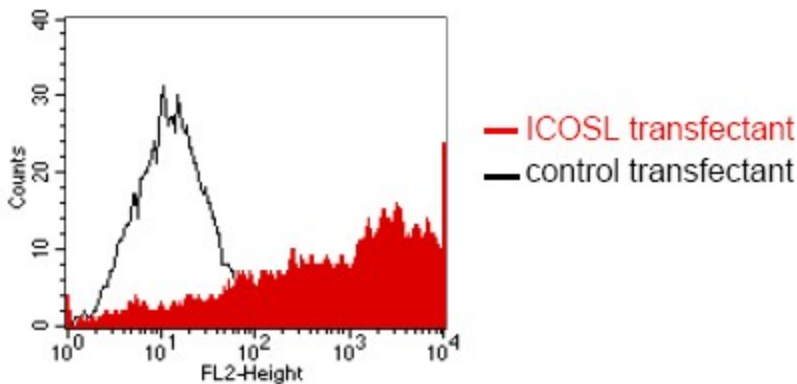


Fig.1: FACS analysis of BOSC23 cells using GM-13C1. BOSC23 cells were transiently transfected with an expression vector encoding either ICOSL (red curve) or an irrelevant protein (control transfectant: black curve). Binding of GM-13C1 was detected with a PE-conjugated secondary antibody. A positive signal was obtained only with ICOSL trans-fected cells.