

Product datasheet for **DM066R**

Glycophorin A (GYPA) Mouse Monoclonal Antibody [Clone ID: JC159]

Product data:

Product Type:	Primary Antibodies
Clone Name:	JC159
Applications:	FC
Recommended Dilution:	Flow Cytometry analysis of human blood cells using 10 µl reagent / 100 µl of whole blood or 10 ⁶ cells in a suspension. The content of a vial (1 ml) is sufficient for 100 tests.
Reactivity:	Human, Rat
Host:	Mouse
Isotype:	IgG1
Clonality:	Monoclonal
Immunogen:	Membrane preparation from splenic hairy cell leukemia
Specificity:	This antibody recognizes an epitope between amino acids 27 and 40 of the extracellular portion of CD235a (glycophorin A), a sialoglycoprotein expressed on early erythroblasts, late erythroblasts, erythroblasts, mature erythrocytes and the cells of erythroid cell lines K562 and HEL. The antibody does not react with glycophorin B.
Formulation:	PBS Label: PE State: Liquid purified Ig fraction Preservative: 15 mM Sodium Azide Label: Conjugated with R-Phycoerythrin (PE) under optimum conditions. The conjugate is purified by size-exclusion chromatography and adjusted for direct use.
Purification:	Size-exclusion chromatography
Conjugation:	PE
Storage:	Store the antibody undiluted at 2-8°C. DO NOT FREEZE! This product is photosensitive and should be protected from light.
Stability:	Shelf life: one year from despatch.
Gene Name:	glycophorin A (MNS blood group)



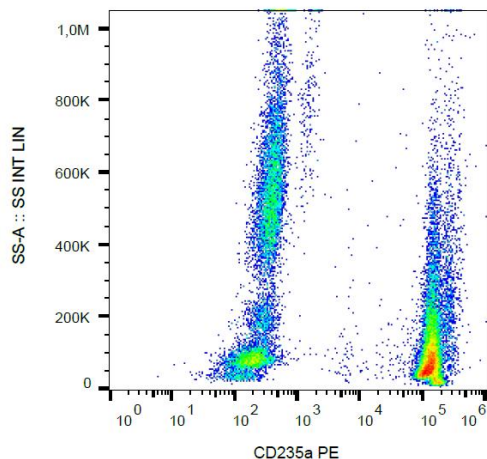
[View online »](#)

Database Link: [Entrez Gene 2993 Human P02724](#)

Background: CD235a (Glycophorin A, GPA) is a transmembrane sialoglycoprotein expressed on erythrocytes and their precursors. Similarly to glycophorin B (GPB), these molecules provide the cells with a large mucin-like surface, which minimalizes aggregation between erythrocytes in the circulation. GPA is the carrier of blood group M and N specificities, while GPB accounts for S, s and U specificities. CD235a is a receptor of Hsa, an Streptococcus adhesin.

Synonyms: Glycophorin-A, GPA, PAS-2, Sialoglycoprotein alpha, MN sialoglycoprotein

Product images:



Surface staining of CD235a in human peripheral blood (erythrocytes and leukocytes) with anti-CD235a (JC159) PE.