

Product datasheet for **DM066F**

Glycophorin A (GYPA) Mouse Monoclonal Antibody [Clone ID: JC159]

Product data:

| | |
|-----------------------|---|
| Product Type: | Primary Antibodies |
| Clone Name: | JC159 |
| Applications: | FC |
| Recommended Dilution: | Flow Cytometry analysis of human blood cells using 4 µl reagent / 100 µl of whole blood or 10 ⁶ cells in a suspension. The content of a vial (0.4 ml) is sufficient for 100 tests. |
| Reactivity: | Human, Rat |
| Host: | Mouse |
| Isotype: | IgG1 |
| Clonality: | Monoclonal |
| Immunogen: | Membrane preparation from splenic hairy cell leukemia |
| Specificity: | This Monoclonal antibody JC159 recognizes an epitope between amino acids 27 and 40 of the extracellular portion of CD235a (glycophorin A), a sialoglycoprotein expressed on early erythroblasts, late erythroblasts, erythroblasts, mature erythrocytes and the cells of erythroid cell lines K562 and HEL. The antibody does not react with glycophorin B. |
| Formulation: | Stabilizing Phosphate buffered saline (PBS) Label: FITC State: Liquid purified Ig fraction Preservative: 15 mM Sodium Azide Label: Conjugated with Fluorescein isothiocyanate (FITC) under optimum conditions. The reagent is free of unconjugated FITC and adjusted for direct use. |
| Conjugation: | FITC |
| Storage: | Store the antibody undiluted at 2-8°C. DO NOT FREEZE! This product is photosensitive and should be protected from light. |
| Stability: | Shelf life: one year from despatch. |
| Gene Name: | glycophorin A (MNS blood group) |
| Database Link: | Entrez Gene 2993 Human P02724 |



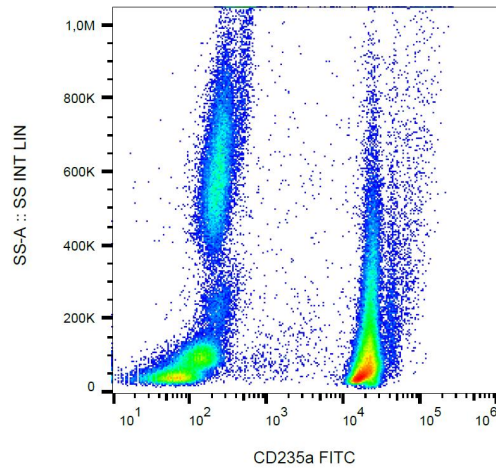
[View online »](#)

Background:

CD235a (Glycophorin A, GPA) is a transmembrane sialoglycoprotein expressed on erythrocytes and their precursors. Similarly to glycophorin B (GPB), these molecules provide the cells with a large mucin-like surface, which minimalizes aggregation between erythrocytes in the circulation. GPA is the carrier of blood group M and N specificities, while GPB accounts for S, s and U specificities. CD235a is a receptor of Hsa, an Streptococcus adhesin.

Synonyms:

Glycophorin-A, GPA, PAS-2, Sialoglycoprotein alpha, MN sialoglycoprotein

Product images:

Surface staining of CD235a in human peripheral blood (erythrocytes and leukocytes) with anti-CD235a (JC159) FITC.