

Product datasheet for **DM057S**

Cytokeratin 7 (KRT7) Mouse Monoclonal Antibody [Clone ID: OVTL-12/30]

Product data:

Product Type:	Primary Antibodies
Clone Name:	OVTL-12/30
Applications:	IF, IHC, WB
Recommended Dilution:	Immunoblotting. Immunocytochemistry. Immunohistochemistry on Formalin-Fixed, Paraffin-Embedded Sections: 1/50-1/100 Retrieval conditions: Pretreatment of tissue with proteolytic enzymes should be performed prior to staining. Use Polymer anti Mouse/Rabbit IgG as a detection system. <i>Positive Control:</i> Ovarian carcinoma.
Reactivity:	Human
Host:	Mouse
Isotype:	IgG1
Clonality:	Monoclonal
Immunogen:	OTN II ovarian carcinoma cell line.
Specificity:	Antibody to Cytokeratin is useful in distinguishing ovarian carcinomas (keratin 7+) from colon carcinomas (keratin 7-). OVTL 12-30 decorates specific subtypes of adenocarcinoma. Cellular Localization: cytoplasmic.
Formulation:	State: Supernatant State: Liquid purified IgG fraction with 0.2% BSA and 15mM Sodium Azide.
Conjugation:	Unconjugated
Storage:	Store the antibody undiluted at 2-8°C.
Stability:	Shelf life: one year from despatch.
Gene Name:	keratin 7
Database Link:	Entrez Gene 54474 Human Entrez Gene 3855 Human P08729



[View online »](#)

Background:

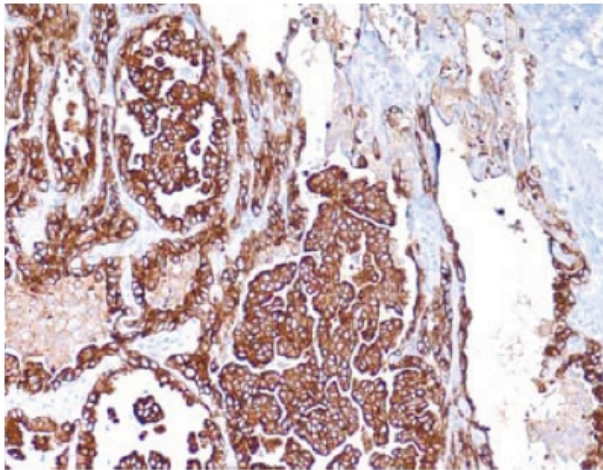
Cytokeratins are a subfamily of intermediate filament proteins and are characterized by a remarkable biochemical diversity, represented in human epithelial tissues by at least 20 different polypeptides. They range in molecular weight between 40 kDa and 68 kDa and isoelectric pH between 4.9-7.8. The individual human cytokeratins are numbered 1 to 20. The various epithelia in the human body usually express cytokeratins which are not only characteristic of the type of epithelium, but also related to the degree of maturation or differentiation within an epithelium.

Keratin K7 is found in the columnar and glandular epithelium of the lung, cervix, breast, bile ducts, larger collecting ducts of the kidney and in mesothelium, but is normally absent from gastrointestinal epithelium, hepatocytes and myoepithelium.

Several types of adenocarcinomas of the urinary tract are negative, while adenocarcinomas of the mammary gland, ovary and lung are positive. In colorectal carcinoma early stages are reported to be negative but advanced stages of tumor development are positive for keratin K7 expression.

Synonyms:

KRT7, KRT-7, SCL, CK-7, CK7, Keratin-7, K7, K-7, Sarcolectin

Product images:

Formalin-Fixed, Paraffin-Embedded Human ovarian carcinoma stained with Cytokeratin-7 antibody Cat.-No. DM057S using peroxidase conjugate and DAB chromogen. Note the cytoplasmic staining of tumor cells.