

## Product datasheet for **DM056P**

### **KRT13 (+ KRT10) Mouse Monoclonal Antibody [Clone ID: DE-K13]**

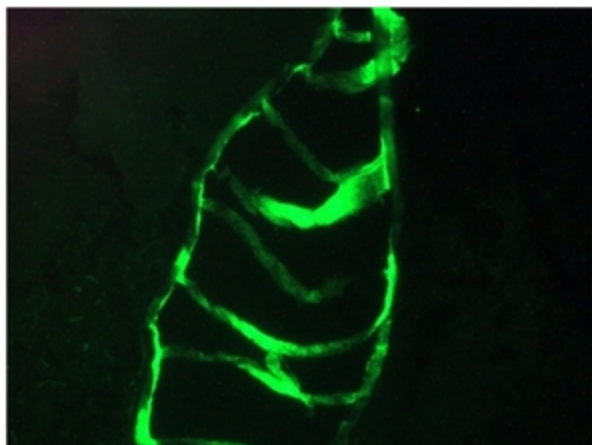
#### **Product data:**

|                       |  |
|-----------------------|--|
| Product Type:         | Primary Antibodies   |
| Clone Name:           | DE-K13   |
| Applications:         | FC, IF, IHC, WB  |
| Recommended Dilution: | <b>Immunoblotting</b><br><b>Immunocytochemistry.</b><br><b>Immunofluorescence.</b><br><b>Immunohistochemistry on Frozen Sections and Paraffin-Embedded tissues.</b><br><b>Flow Cytometry.</b><br><i>Recommended Dilutions:</i> 1/100-1/200 for Flow Cytometry, and for Immunohistochemistry with avidin-biotinylated horseradish peroxidase complex (ABC) as detection reagent, and 1/100-1/1000 for Immunoblotting applications.<br>For staining on Paraffin-embedded tissues pretreatment with 0,1% pepsin in 0.1N HCl for 30 min at room temperature is required.     |
| Reactivity:           | Canine, Feline, Human, Zebrafish   |
| Host:                 | Mouse  |
| Isotype:              | IgG2a  |
| Clonality:            | Monoclonal   |
| Immunogen:            | Cytoskeletal preparation extracted from Human ectocervical epithelium.   |
| Specificity:          | <i>DE-K13</i> reacts with Cytokeratin 10 and 13 in fixed cells and on frozen tissues, but exclusively with cytokeratin 13 in Formalin-Fixed, Paraffin Embedded tissues.<br>Cytokeratin 10 is present in keratinizing stratified epithelia and in differentiated areas of highly differentiated squamous cell carcinomas, while Cytokeratin 13 is present in noncornified squamous epithelia, except cornea, and transitional epithelial regions, with the exception of basal cell layers of some stratified epithelia, as well as carcinomas derived from these tissues. |
| Formulation:          | PBS<br>State: Purified<br>State: Liquid purified IgG fraction<br>Preservative: 0.09% Sodium Azide  |
| Concentration:        | lot specific   |



[View online »](#)

|                       |   |
|-----------------------|---|
| <b>Conjugation:</b>   | Unconjugated  |
| <b>Storage:</b>       | Store undiluted at 2-8°C for one month or (in aliquots) at -20°C for longer.<br>Avoid repeated freeze-thaw cycles.  |
| <b>Stability:</b>     | Shelf life: One year from despatch.   |
| <b>Gene Name:</b>     | keratin 13  |
| <b>Database Link:</b> | <a href="#">Entrez Gene 3860 Human P13646</a>   |
| <b>Background:</b>    | Cytokeratins are a subfamily of intermediate filament proteins and are characterized by a remarkable biochemical diversity, represented in human epithelial tissues by at least 20 different polypeptides. They range in molecular weight between 40 kDa and 68 kDa and isoelectric pH between 4.9 - 7.8. The individual human cytokeratins are numbered 1 to 20. The various epithelia in the human body usually express cytokeratins which are not only characteristic of the type of epithelium, but also related to the degree of maturation or differentiation within an epithelium. Cytokeratin subtype expression patterns are used to an increasing extent in the distinction of different types of epithelial malignancies. The cytokeratin antibodies are not only of assistance in the differential diagnosis of tumors using immunohistochemistry on tissue sections, but are also a useful tool in cytopathology and flow cytometric assays. |
| <b>Synonyms:</b>      | CK-13, CK13, Keratin-13, KRT13, K13, KRT-13   |

**Product images:**

Immunofluorescence staining of a 7 days old Zebrafish embryo.