

## Product datasheet for **DM028-05**

### CD21 (CR2) Mouse Monoclonal Antibody [Clone ID: 1F8]

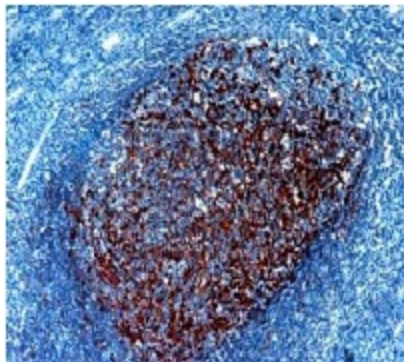
#### Product data:

Product Type:	Primary Antibodies
Clone Name:	1F8
Applications:	IHC
Recommended Dilution:	Immunohistochemistry on paraffin embedded sections: use a dilution of 1:10-1:25 in an ABC method (30 minutes incubation at room temperature) Recommended positive control: Tonsil
Reactivity:	Human
Host:	Mouse
Isotype:	IgG1
Clonality:	Monoclonal
Immunogen:	Purified receptor for the C3d fragment of the third complement component CR2, from human tonsil.
Specificity:	This antibody reacts with CD21 antigen of MW 145 kD, present on the surface of mature B cells. Cellular Localization: Cell membrane
Formulation:	State: Supernatant State: Liquid tissue culture supernatant containing sodium azide as preservative.
Conjugation:	Unconjugated
Storage:	Store the antibody undiluted at 2-8°C for one month or (in aliquots) at -20°C for longer. Avoid repeated freezing and thawing.
Stability:	Shelf life: one year from despatch.
Gene Name:	complement component 3d receptor 2
Database Link:	<a href="#">Entrez Gene 1380 Human P20023</a>
Background:	The antigen is present at high density on follicular dendritic cells. CD21 is involved in transmitting growth promoting signals to the interior of the B cell.
Synonyms:	Complement receptor type 2, CR2, C3DR, C3d receptor, EBV Receptor, Dendritic Cell Marker



[View online »](#)

**Product images:**



Formalin Fixed, Paraffin Embedded Human Tonsil stained with CD21 antibody DM028 / DM028-05