

Product datasheet for **DM001-05**

alpha smooth muscle Actin (ACTA2) Mouse Monoclonal Antibody [Clone ID: 1A4/asm-1]

Product data:

Product Type:	Primary Antibodies
Clone Name:	1A4/asm-1
Applications:	IHC
Recommended Dilution:	Immunohistochemistry on Formalin Fixed Paraffin Embedded Sections: Use Actin antibody at 1/25-1/50 dilution in an ABC method for 30 minutes at room temperature. Recommended Positive Control: Leiomyoma colon.
Reactivity:	Bovine, Chicken, Human, Mouse, Rabbit, Rat
Host:	Mouse
Isotype:	IgG2a
Clonality:	Monoclonal
Immunogen:	N-terminal decapeptide of alpha-smooth muscle Actin
Specificity:	This antibody is specific to alpha-smooth isoform of actin. It reacts with smooth muscle cells of vessels and different parenchymes. The antibody does not cross-react with beta and gamma-cytoplasmic, alpha-sarcomeric and alpha-myocardial actin isoforms. Cellular Localization: Cytoplasmic.
Formulation:	State: Purified State: Liquid purified Ig fraction containing Sodium Azide as preservative
Conjugation:	Unconjugated
Storage:	Store the antibody undiluted at 2-8°C.
Stability:	Shelf life: one year from despatch.
Gene Name:	actin, alpha 2, smooth muscle, aorta
Database Link:	Entrez Gene 59 Human P62736



[View online »](#)

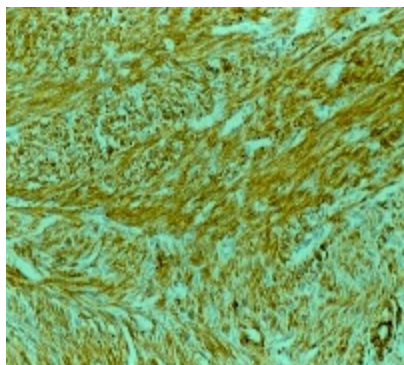
Background:

Smooth muscle actin is expressed in normal smooth muscle and in myoepithelial cells, and also in tumours derived from these cells. Actins are involved in maintaining the structure and integrity of a cell, as well as cell motility. They are highly conserved proteins and make up the majority of the contractile apparatus. To date, six different actin isoforms have been described.

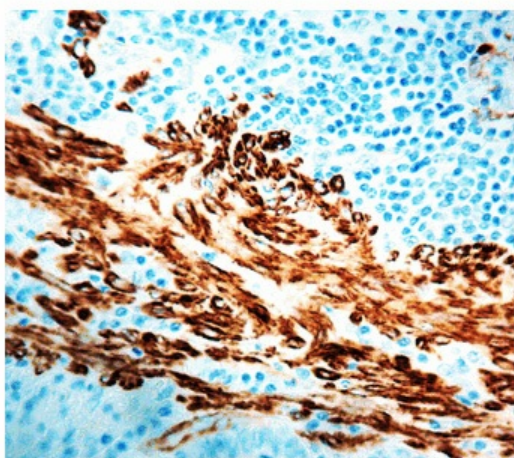
Synonyms:

ACTSA, ACTVS, Alpha-actin-2

Product images:



Formalin fixed paraffin embedded human leiomyoma stained with Smooth Muscle Actin antibody DM001.



Formalin fixed paraffin embedded human colon stained with Smooth Muscle Actin antibody DM001.