

## Product datasheet for **DDX9022P-100**

### CD49b (ITGA2) Human Monoclonal Antibody [Clone ID: B4F12]

#### Product data:

Product Type:	Primary Antibodies
Clone Name:	B4F12
Applications:	ELISA, FC, IF
Recommended Dilution:	<b>IF, ELISA, preferential detection of activated platelet by flow cytometry, platelet aggregation studies.</b> <b>Usage recommendation:</b> *This monoclonal antibody may be used between 5-25µg/ml. *Optimal dilution should be determined by each laboratory for each application. *Coupled antibody: to maintain RT before use.
Reactivity:	Human
Host:	Human
Isotype:	IgG1
Clonality:	Monoclonal
Immunogen:	CD40 activated and EBV immortalized human B lymphocytes
Specificity:	GPIa-IIa preferentially on activated platelets.
Formulation:	100 µg in 200 µl / 50 µg in 100 µl Tris-NaCl pH 8 State: Purified
Concentration:	lot specific
Purification:	QMA Hyper D ion exchange chromatography
Storage:	<b>-20°C. KEEP CONTENTS STERILE: no preservative.</b> <b>Purified antibodies: avoid repeated freeze/thaw cycles.</b> <b>Coupled antibodies: glycerol protects from freezing.</b>
Gene Name:	integrin subunit alpha 2
Database Link:	<a href="#">Entrez Gene 3673 Human</a>



[View online »](#)

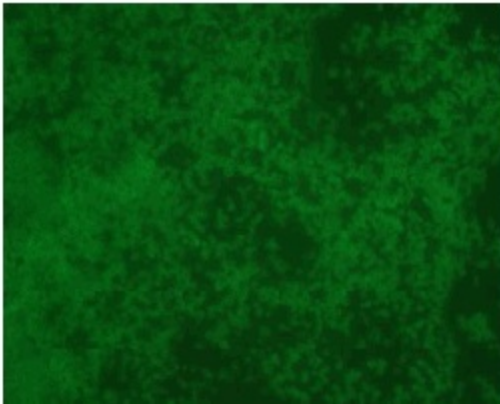
**Background:**

Neonatal Alloimmune Thrombocytopenia (NAIT) is the commonest cause of severe isolated thrombocytopenia in the foetus and newborn. In Caucasians, 97% of NAIT are caused by HPA-1a or HPA- 5b alloantibodies. B4F12 was isolated after combination of CD40 activation and Epstein-Barr virus transformation of B cells isolated from a woman with high titre of anti - HPA-5b alloantibodies. B4F12 human monoclonal antibody recognizes GPIa-IIa preferentially on activated human platelets (*Mérieux Y, Rigal D, Pin JJ, XVIIth Regional Congress, International Society of Blood Transfusion, Madrid 2007 ; Guillot-Chene P, Lebecque S, Rigal D, Annales Pharmaceutiques Françaises, 06/2009, 67 (3) 182-6*).

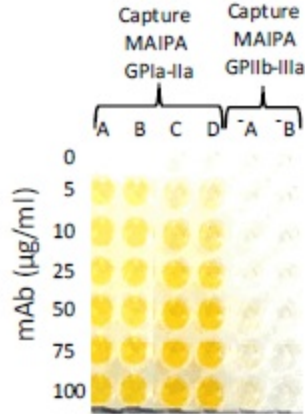
**Synonyms:**

Integrin alpha-2, ITGA-2, VLA-2 alpha, VLA2, GPIa, Collagen Receptor

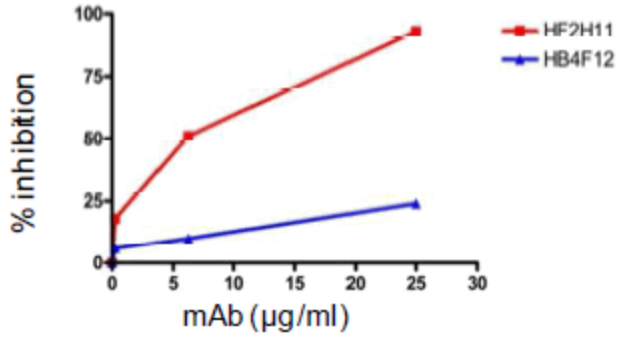
**Product images:**



IF staining of human platelets with **B4F12**



ELISA detection of human platelets with **B4F12**



Inhibition of collagen-induced platelet aggregation by **F2H11** and **B4F12**