

Product datasheet for **DDX9022A647-100**

CD49b (ITGA2) Human Monoclonal Antibody [Clone ID: B4F12]

Product data:

Product Type:	Primary Antibodies
Clone Name:	B4F12
Applications:	FC, IF
Recommended Dilution:	IF, ELISA, preferential detection of activated platelet by flow cytometry, platelet aggregation studies. Usage recommendation: *This monoclonal antibody may be used between 5-25µg/ml. *Optimal dilution should be determined by each laboratory for each application. *Coupled antibody: to maintain RT before use.
Reactivity:	Human
Host:	Human
Isotype:	IgG1
Clonality:	Monoclonal
Immunogen:	CD40 activated and EBV immortalized human B lymphocytes
Specificity:	GPIa-IIa preferentially on activated platelets.
Formulation:	100 µg in 200 µl / 50 µg in 100 µl PBS 50% glycerol Label: Alexa Fluor 647
Concentration:	lot specific
Purification:	QMA Hyper D ion exchange chromatography
Conjugation:	Alexa Fluor 647
Storage:	-20°C. KEEP CONTENTS STERILE: no preservative. Purified antibodies: avoid repeated freeze/thaw cycles. Coupled antibodies: glycerol protects from freezing.
Gene Name:	integrin subunit alpha 2
Database Link:	Entrez Gene 3673 Human



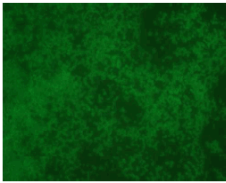
[View online »](#)

Background:

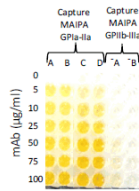
Neonatal Alloimmune Thrombocytopenia (NAIT) is the commonest cause of severe isolated thrombocytopenia in the foetus and newborn. In Caucasians, 97% of NAIT are caused by HPA-1a or HPA-5b alloantibodies. B4F12 was isolated after combination of CD40 activation and Epstein-Barr virus transformation of B cells isolated from a woman with high titre of anti-HPA-5b alloantibodies. B4F12 human monoclonal antibody recognizes GPIIb/IIIa preferentially on activated human platelets (*Mérieux Y, Rigal D, Pin JJ, XVIIth Regional Congress, International Society of Blood Transfusion, Madrid 2007 ; Guillot-Chene P, Lebecque S, Rigal D, Annales Pharmaceutiques Françaises, 06/2009, 67 (3) 182-6*).

Synonyms:

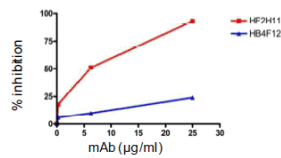
Integrin alpha-2, ITGA-2, VLA-2 alpha, VLA2, GPIa, Collagen Receptor

Product images:


IF staining of human platelets with **B4F12**



ELISA detection of human platelets with **B4F12**



Inhibition of collagen-induced platelet aggregation by **F2H11** and **B4F12**