

## Product datasheet for **DDX0910-HRPO-100**

### alpha Synuclein (SNCA) Mouse Monoclonal Antibody [Clone ID: AS11]

#### Product data:

|                       |   |
|-----------------------|---|
| Product Type:         | Primary Antibodies  |
| Clone Name:           | AS11  |
| Applications:         | IHC, WB   |
| Recommended Dilution: | <b><u>DDX0910P-50 / DDX0910P-100 Purified:</u></b> ImmunoFluorescence, ImmunoHistoChemistry frozen sections, Western Blot.<br><b><u>DDX0910A488-50 / DDX0910A488-100 Alexa-fluor@488:</u></b> ImmunoFluorescence.<br><b><u>DDX0910A546-50 / DDX0910A546-100 Alexa-fluor@546:</u></b> ImmunoFluorescence.<br><b><u>DDX0910A647-50 / DDX0910A647-100 Alexa-fluor@647:</u></b> ImmunoFluorescence.<br><b><u>DDX0910HRP-50 / DDX0910HRP-100 Horseradish Peroxydase:</u></b> ImmunoHistoChemistry frozen sections, Western Blot. |

#### Usage recommendation:

- \*This monoclonal antibody may be used between 5-20 µg/ml.
- \*Optimal dilution should be determined by each laboratory for each application.
- \*Coupled antibody: to maintain RT before use.

|                |  |
|----------------|--|
| Reactivity:    | Human  |
| Host:          | Mouse  |
| Isotype:       | IgG  |
| Clonality:     | Monoclonal   |
| Immunogen:     | rhu α-synuclein (SIGMA).   |
| Specificity:   | N-terminal portion of Human α-synuclein (aa1-60)<br><b>Species cross-reactivity:</b> Negative for Murine α-synuclein.  |
| Formulation:   | <b><u>Purified:</u></b> 100 µg in 200µl / 50 µg in 100 µl Tris-NaCl pH 8.<br><b><u>Coupled:</u></b> 100 µg in 200µl / 50 µg in 100 µl Tris PBS 50% glycerol.<br>Label: HRP |
| Concentration: | lot specific   |
| Purification:  | QMA Hyper D ion exchange chromatography  |
| Conjugation:   | HRP  |



[View online »](#)

**Storage:** -20°C. **KEEP CONTENTS STERILE: no preservative.**  
**Purified antibodies:** avoid repeated freeze/thaw cycles.  
**Coupled antibodies:** glycerol protects from freezing.

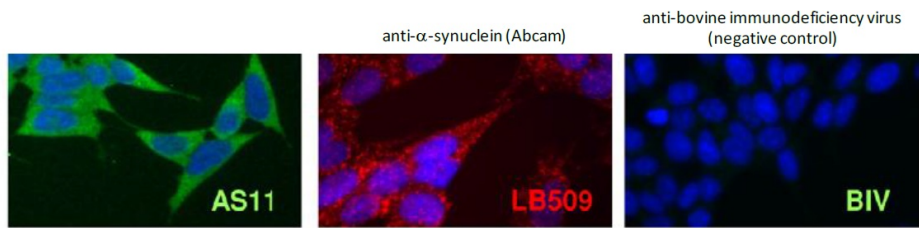
**Gene Name:** synuclein alpha

**Database Link:** [Entrez Gene 6622 Human](#)

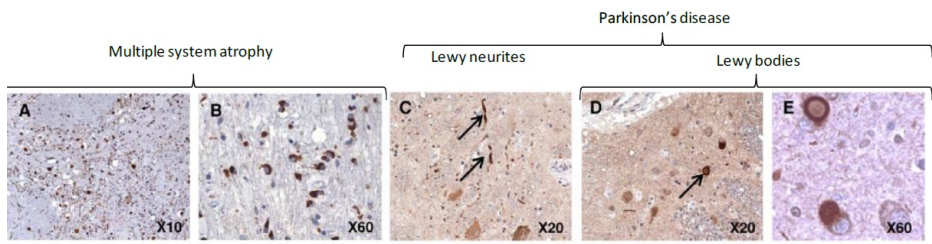
**Background:** α-synuclein (snca) is a 140 aas neuronal protein predominantly present in synaptic junctions, specially studied for its relevance in understanding sporadic and familial forms of Parkinson’s disease and related neurodegenerative disorders. In an attempt to break the immunotolerance since the amino-acid sequence is highly conserved between species (95.3% homology between human and mouse), we have immunized C57BL/6 inbred mice presenting a natural deletion for snca with recombinant human α-synuclein and obtained a murine mAb (AS11) recognizing endogenous human α-synuclein. (*Kahle et al., 2000, J Neurosci 2000;20:6365-73* ; *Specht and Schoepfer, BMC Neurosci 2001;2:11* ; *Mougenot AL et al, J Neurosci Methods. 2010 Oct 15;192(2):268-76*).

**Synonyms:** NACP, PARK1

**Product images:**



IF staining of human neuroblastoma (SH-SY5Y) expressing endogenous α-synuclein



IHC staining of pathological human brains with AS11