

Product datasheet for **DDX0490P-100**

TLR10 Mouse Monoclonal Antibody [Clone ID: 25F9]

Product data:

Product Type:	Primary Antibodies
Clone Name:	25F9
Applications:	FC, IHC
Recommend Dilution:	<u>DDX0490P-50 / DDX0490P-100 Purified</u> : FACS intracellular, ImmunoHistoChemistry frozen sections. <u>DDX0490A490-50 / DDX0490A488-100 Alexa-fluor@488 (on request)</u> : FACS intracellular, ImmunoFluorescence. <u>DDX0490A546-50 / DDX0490A546-100 Alexa-fluor@546 (on request)</u> : FACS intracellular, ImmunoFluorescence. <u>DDX0490A647-50 / DDX0490A647-100 Alexa-fluor@647(on request)</u> : FACS intracellular.

Usage recommendation:

- *This monoclonal antibody may be used between 1-10 µg/ml.
- *Optimal dilution should be determined by each laboratory for each application.
- *Coupled antibody: to maintain RT before using.

Reactivity:	Human
Host:	Mouse
Isotype:	IgG1
Clonality:	Monoclonal
Immunogen:	rhTLR10-transfected eukaryotic cells.
Specificity:	Human TLR10.
Formulation:	<u>Purified</u> : 100 µg in 200µl / 50 µg in 100 µl Tris-NaCl pH 8. <u>Coupled</u> : 100 µg in 200µl / 50 µg in 100 µl Tris PBS 50% glycerol. State: Purified
Concentration:	0.5 mg/ml
Gene Name:	toll like receptor 10
Database Link:	Entrez Gene 81793 Human



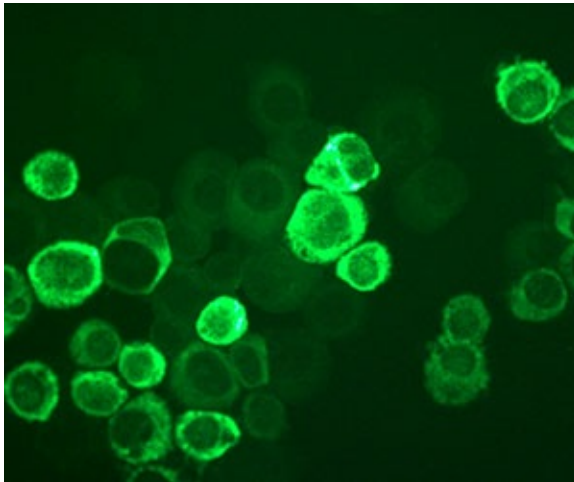
[View online »](#)

Background:

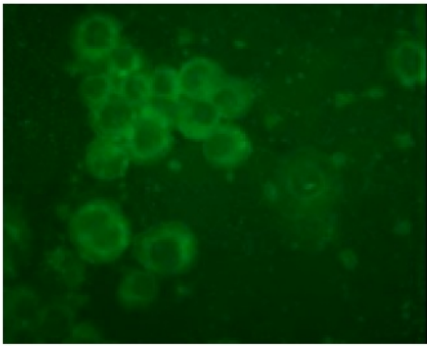
The Toll-Like Receptors (TLR) is a family of germline-encoded proteins, composed of C-terminal leucinerich repeats (LRR), and an N-terminal Toll/Interleukin-1 Receptor (TIR) domain (1). In humans, 10 TLRs, sharing high sequence homology, have been identified. TLRs are critical for the detection of pathogen-associated molecular patterns (PAMPs) by the innate immune system. LRR recognize PAMPs, and signal transduction events, initiated by the TIR domain, lead to activation of the transcription factors such as AP-1, IRFs and NFκB, and therefore expression of proinflammatory cytokines and costimulatory molecules. TLR10 mRNA is detected in spleen, tonsils, lymph nodes, bone marrow and PBLs. Human TLR10 is an orphan member of the TLR family. Genomic studies indicate that TLR10 is in a locus that also contains TLR1 and TLR6, two receptors known to function as coreceptors for TLR2. (Akira, S et al, *Nat Rev Immunol*, 2004 4:499-511 ; Flacher V et al, *J.Immunol*, 2006,177, 959-67 ; Hasan U et al, *J.Immunol*, 2005, 174, 2942-50).

Synonyms:

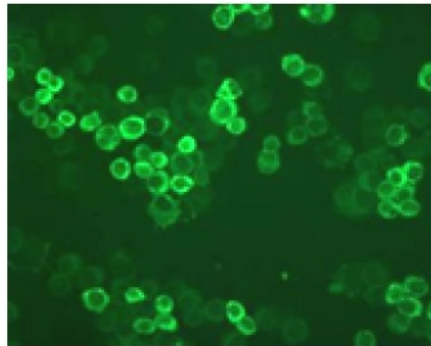
Toll-like receptor 10, UNQ315/PRO358

Product images:

IF staining of hTLR10-transfected COP5 cells with 25F9 (DDX0490)

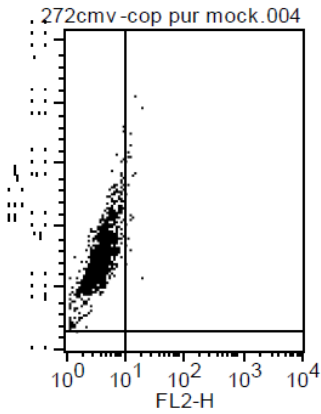


Untransfected COP cells

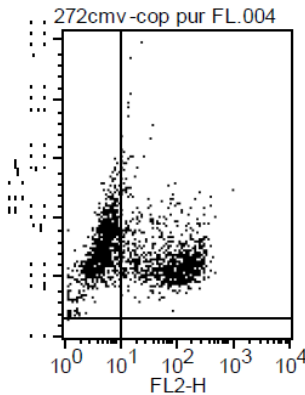


TLR10 transfected COP cells

Immunofluorescence staining with 25F9



Untransfected COP cells



TLR10 transfected COP cells

Intracellular FACS staining with 25F9