

Product datasheet for **DDX0376P-100**

Cd207 Rat Monoclonal Antibody [Clone ID: 918A11]

Product data:

Product Type: Primary Antibodies
Clone Name: 918A11
Applications: FC, IF, IHC
Recommended Dilution: **FACS surface, ImmunoFluorescence, ImmunoHistoChemistry frozen sections.**

Usage recommendation:

*This monoclonal antibody may be used between 5-20 µg/ml.
*Optimal dilution should be determined by each laboratory for each application.
*Coupled antibody: to maintain RT before use.

Reactivity: Human, Mouse, Rat
Host: Rat
Isotype: IgG1
Clonality: Monoclonal
Immunogen: Human Langerin-transfected eukaryotic cells.
Specificity: Human Langerin.
Species cross-reactivity: Rat, Mouse.
Formulation: **Purified:** 100 µg in 200µl / 50 µg in 100 µl Tris-NaCl pH 8.
Coupled: 100 µg in 200µl / 50 µg in 100 µl PBS 50% glycerol.
State: Purified
Concentration: lot specific
Purification: QMA Hyper D ion exchange chromatography
Storage: **-20°C. KEEP CONTENTS STERILE: no preservative.**
Purified antibodies: avoid repeated freeze/thaw cycles.
Coupled antibodies: glycerol protects from freezing
Gene Name: CD207 antigen
Database Link: [Entrez Gene 246278 Mouse](#)



[View online »](#)

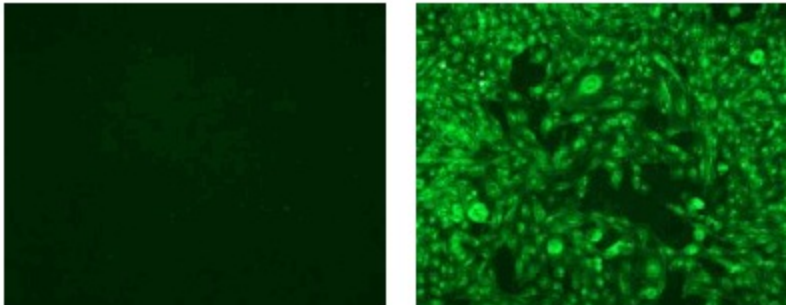
Background:

Langerin/CD207 is a transmembrane C-type lectin receptor (CLR) of epidermal and mucosal Langerhans cells (LCs) that induces Birbeck's granule. Langerin features a single carbohydrate recognition domain (CRD) with mannose-type specificity in its extracellular portion. Langerin expression has not been reported outside the DC system. Human Langerin is involved in the processing of mycobacterial glycolipids leading to antigen presentation to CD1a-restricted T cells. Human Langerin binds the gp120 of HIV.

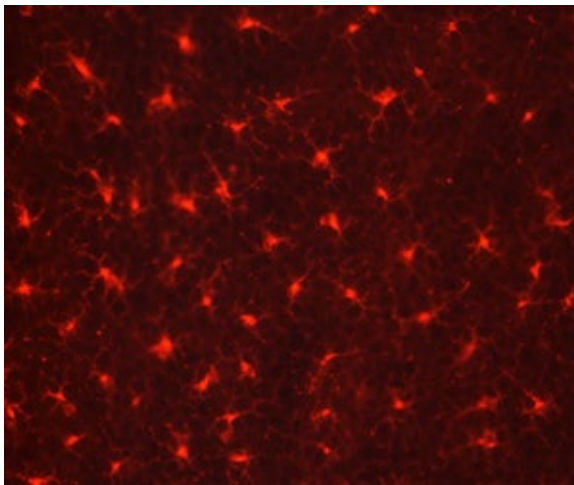
(Valladeau J et al, 2002 *J. Immunol*, 168 : 782-792; Douillard P et al, 2005 *J Invest Dermatol*, 125: 983-994; Chorro L. et al, *J Exp.Med.*, 2010, 206 (13), 3089-3100).

Synonyms:

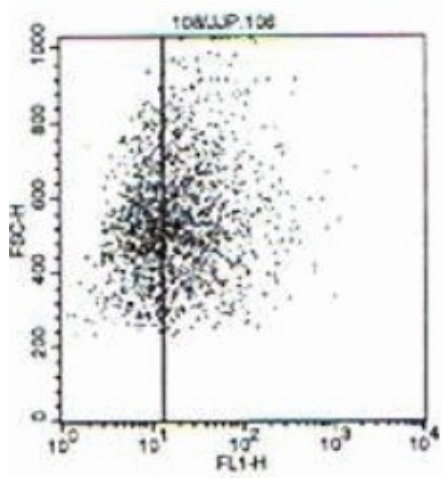
CLEC4K, Dendritic Cell Marker

Product images:

IF staining of mock (left) and Langerin (right) transfected COP5 cells



IF staining of mouse epiderm (ear) frozen section with clone 918A11 (DX0376)



Surface FACS staining of Langerin transfected COP5 cells