

## Product datasheet for **DDX0370A647-100**

### Cd207 Mouse Monoclonal Antibody [Clone ID: 205C1]

#### Product data:

Product Type:	Primary Antibodies
Clone Name:	205C1
Applications:	FC, IF
Recommend Dilution:	<b>FACS, IF</b> (Douillard P et al, 2005 J. Invest. Dermatol, 125: 983–994).

#### Usage recommendation:

- \*This monoclonal antibody may be used between 5-20 µg/ml.
- \*Optimal dilution should be determined by each laboratory for each application.
- \*Coupled antibody: to maintain RT before using.

Reactivity:	Mouse
Host:	Mouse
Isotype:	IgM
Clonality:	Monoclonal
Immunogen:	Mouse ear crawl-out Langerhans cells.
Specificity:	Mouse Langerin.
Formulation:	<b>Purified:</b> 100 µg in 200µl / 50 µg in 100 µl Tris-NaCl pH 8. <b>Coupled:</b> 100 µg in 200µl / 50 µg in 100 µl PBS 50% glycerol. Label: Alexa Fluor 647
Concentration:	0.5 mg/ml
Purification:	Hyper-D ion exchange chromatography
Conjugation:	Alexa Fluor 647
Gene Name:	CD207 antigen
Database Link:	<a href="#">Entrez Gene 246278 Mouse</a>



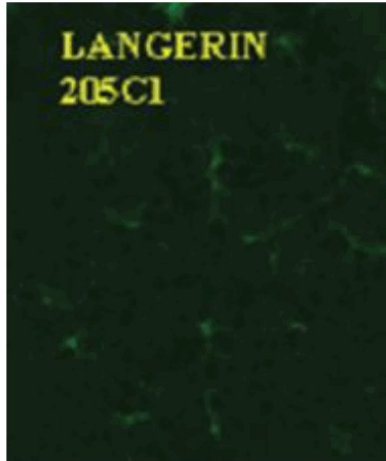
[View online »](#)

**Background:**

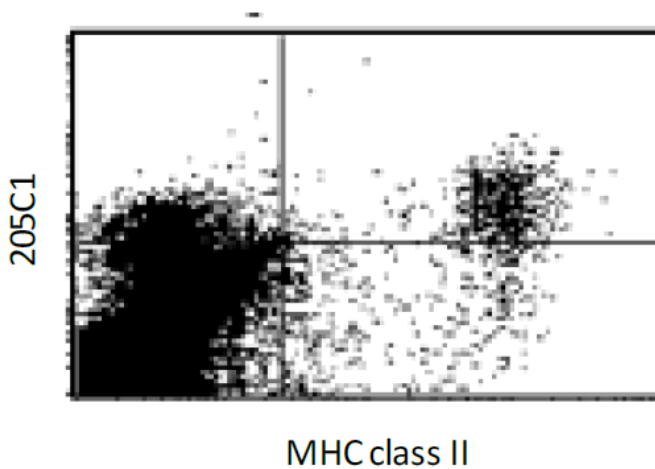
Langerin/CD207 is a transmembrane C-type lectin receptor (CLR) of epidermal and mucosal Langerhans cells (LCs) that induces Birbeck's granule formation. Langerin features a single carbohydrate recognition domain (CRD) with mannose-type specificity in its extracellular portion. Langerin is unique among the CLRs in that it contains an intracellular domain with a proline-rich motif. Langerin expression has not been reported outside the DC system. (Valladeau J et al, 2002 J Immunol, 168 : 782-792) (Douillard P et al, 2005 J Invest Dermatol, 125: 983-994).

**Synonyms:**

CLEC4K, Dendritic Cell Marker

**Product images:**

IF on acetone-fixed ear epidermal sheet



Freshly isolated CD11c+ Langerhans cells.