

## Product datasheet for **DDX0368A546-100**

### Langerin (CD207) Mouse Monoclonal Antibody [Clone ID: 306G9.01/HD24]

#### Product data:

Product Type: Primary Antibodies  
Clone Name: 306G9.01/HD24  
Applications: IF  
Recommend Dilution: **Flow cytometry, IF, IHC.**

#### Usage recommendation:

\*This monoclonal antibody may be used between 5-20 µg/ml  
\*Optimal dilution should be determined by each laboratory for each application.  
\*Coupled antibody: to maintain RT before using.

Reactivity: Human, Mouse, Porcine, Rat  
Host: Mouse  
Isotype: IgG1  
Clonality: Monoclonal  
Immunogen: Mouse langerin-transfected COP5 cells.  
Specificity: Mouse and Human Langerin (intracellular epitope).  
**Species cross-reactivity:** Human, Rat, Swine.

Formulation: **Purified:** 100 µg in 200µl / 50 µg in 100 µl Tris-NaCl pH 8.  
**Coupled:** 100 µg in 200µl / 50 µg in 100 µl PBS 50% glycerol.  
Label: Alexa Fluor 546

Concentration: 0.5 mg/ml  
Purification: QMA Hyper D ion exchange chromatography  
Conjugation: Alexa Fluor 546  
Gene Name: CD207 molecule  
Database Link: [Entrez Gene 50489 Human](#)



[View online »](#)

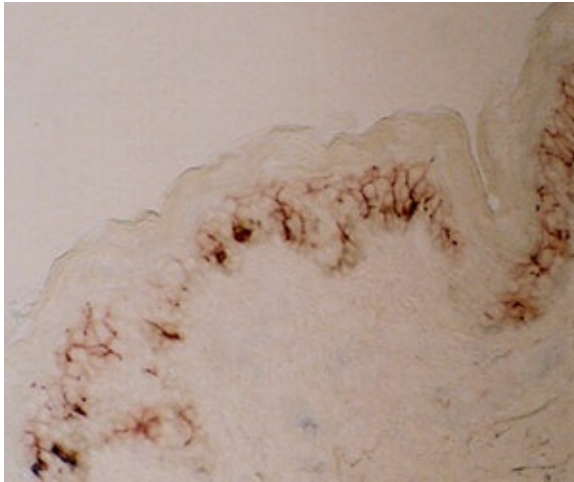
**Background:**

Langerin/CD207 is a transmembrane C-type lectin receptor (CLR) of epidermal and mucosal Langerhans cells (LCs) that induces Birbeck granule formation. Langerin features a single carbohydrate recognition domain (CRD) with mannose-type specificity in its extracellular portion. Langerin is unique among the CLRs in that it contains an intracellular domain with a proline-rich motif. Langerin expression has not been reported outside the DC system. *In mouse, clone 306G9 stains lymph node dendritic cells (Henri et al, 2001, J. Immunol, 167: 741-748) (Valladeau J. et al, 2002 J Immunol, 168: 782).*

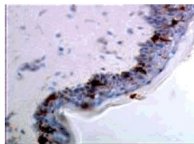
**Synonyms:**

CLEC4K, Dendritic Cell Marker

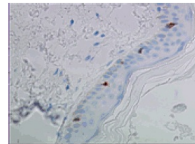
**Product images:**



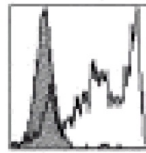
IHC staining of human skin frozen section with clone 306G9 (DX0368)



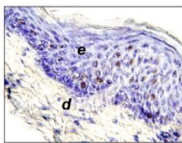
IHC staining of **human** skin frozen section with 306G9 antibody



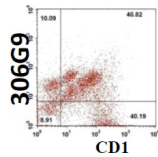
IHC staining of **human** skin paraffin section with 306G9 antibody



Facs analysis of **mouse** Langerin-transfected COP5 cells stained with 306G9 antibody



IHC staining of Langerhans cells in **porcine** skin tissue section



Facs double-staining of **porcine** skin-derived DCs