

## Product datasheet for **DDX0362A488-100**

### Langerin (CD207) Rat Monoclonal Antibody [Clone ID: 929F3.01]

#### Product data:

Product Type:	Primary Antibodies
Clone Name:	929F3.01
Applications:	FC, IF, IHC
Recommend Dilution:	<b><u>DDX0362P-50 / DDX0362P-100</u></b> Purified: IF, IHC formol-paraffin, Flow cytometry. <b><u>DDX0362A488-50 / DDX0362A488-100</u></b> Alexa-fluor® 488: IF, IHC , Flow cytometry.

#### Usage recommendation:

- \*This monoclonal antibody may be used between 5-20 µg/ml.
- \*Optimal dilution should be determined by each laboratory for each application.
- \*Coupled antibody: to maintain RT before use.

Reactivity:	Human, Mouse, Porcine, Rat
Host:	Rat
Isotype:	IgG2a
Clonality:	Monoclonal
Immunogen:	human Langerin-transfected eukaryotic cells
Specificity:	Human Langerin. <b>Species cross-reactivity:</b> Rat, Mouse, Swine.
Formulation:	<b>Purified:</b> 100 µg in 200µl / 50 µg in 100 µl Tris-NaCl pH 8. <b>Coupled:</b> 100 µg in 200µl / 50 µg in 100 µl PBS 50% glycerol. Label: Alexa Fluor 488
Concentration:	0.5 mg/ml
Purification:	QMA Hyper D ion exchange chromatography
Conjugation:	Alexa Fluor 488
Gene Name:	CD207 molecule
Database Link:	<a href="#">Entrez Gene 50489 Human</a>



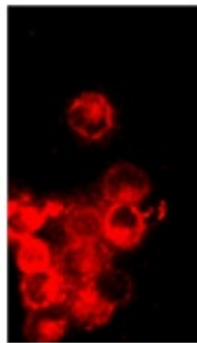
[View online »](#)

**Background:**

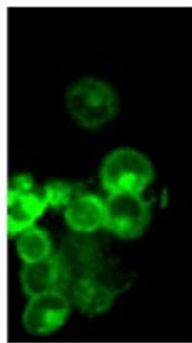
Langerin/CD207 is a transmembrane C-type lectin receptor (CLR) of epidermal and mucosal Langerhans cells (LCs) that induces Birbeck's granule. Langerin features a single carbohydrate recognition domain (CRD) with mannose-type specificity in its extracellular portion. Langerin expression has not been reported outside the DC system. Human Langerin is involved in the processing of mycobacterial glycolipids leading to antigen presentation to CD1a-restricted T cells. Human Langerin binds the gp120 of HIV. (*Valladeau J et al, 2002 J. Immunol, 168 : 782-792; Douillard P et al, 2005 J Invest Dermatol, 125: 983-994; Chorro L. et al, J Exp.Med., 2010, 206 (13), 3089-3100*).

**Synonyms:**

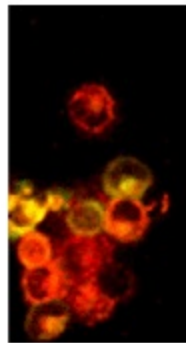
CLEC4K, Dendritic Cell Marker

**Product images:**

929F3

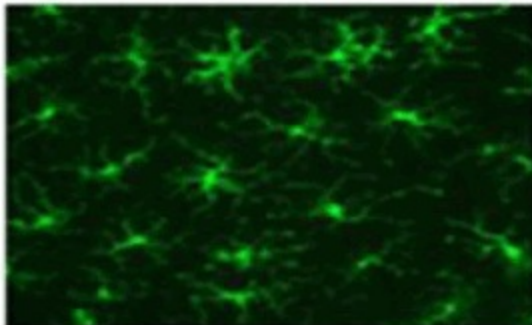


CD1

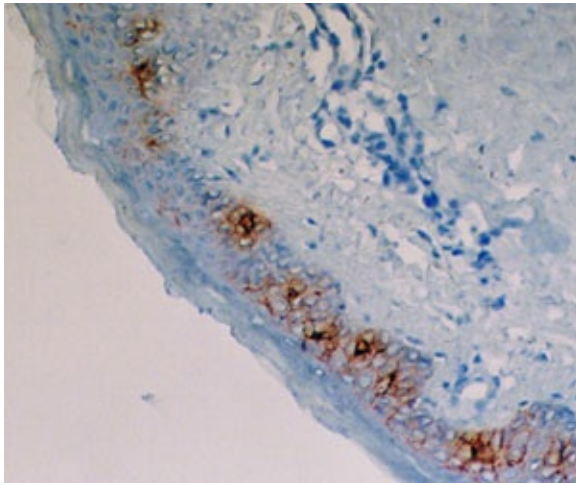


merge

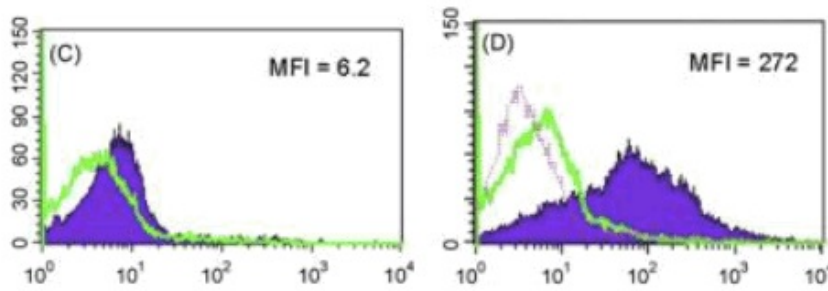
IF staining on isolated skin-isolated porcine Langerhans cells



on mouse epidermal sheet with 929F3-A488



IHC staining of human skin frozen section with clone 929F3 (DX0362)



Cells derived from culture of porcine skin stained permeabilized (D) or not (C) with 929F3