

Product datasheet for **DDX0361P-100**

Langerin (CD207) Mouse Monoclonal Antibody [Clone ID: 310F7.02/HD26]

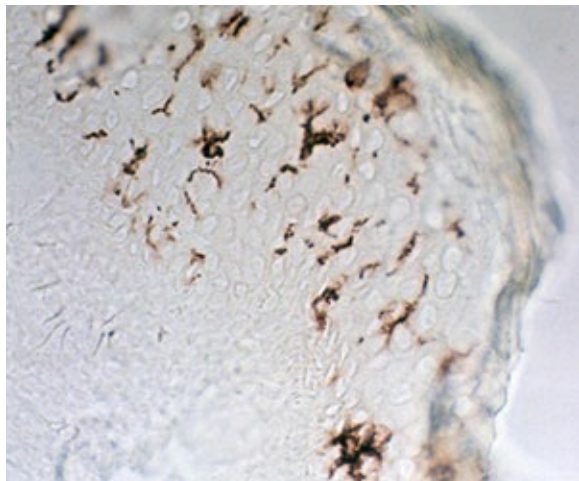
Product data:

Product Type:	Primary Antibodies
Clone Name:	310F7.02/HD26
Applications:	ELISA, FC, IHC
Recommended Dilution:	Paraffin (Bouin) in human section, IHC,ELISA
Reactivity:	Human, Mouse, Porcine, Rat
Host:	Mouse
Isotype:	IgG1
Clonality:	Monoclonal
Immunogen:	mouse Langerin-transfected eukaryotic cells
Specificity:	Mouse Langerin (intracellular epitope).
Formulation:	Tris-NaCl pH 8 State: Purified
Concentration:	lot specific
Purification:	QMA Hyper D ion exchange chromatography
Storage:	-20°C. KEEP CONTENTS STERILE: no preservative. <u>Purified antibodies: avoid repeated freeze/thaw cycles.</u> <u>Coupled antibodies: glycerol protects from freezing.</u>
Gene Name:	CD207 molecule
Database Link:	Entrez Gene 50489 Human
Background:	Langerin/CD207 is a transmembrane C-type lectin receptor (CLR) of epidermal and mucosal Langerhans cells (LCs) that induces Birbeck granule formation. Langerin features a single carbohydrate recognition domain (CRD) with mannose-type specificity in its extracellular portion. Langerin is unique among the CLRs in that it contains an intracellular domain with a proline-rich motif. Langerin expression has not been reported outside the DC system. (Valladeau J et al, 2002 J. Immunol, 168 : 782-792) (Douillard P et al, 2005 J Invest Dermatol, 125: 983-994)
Synonyms:	CLEC4K, Dendritic Cell Marker

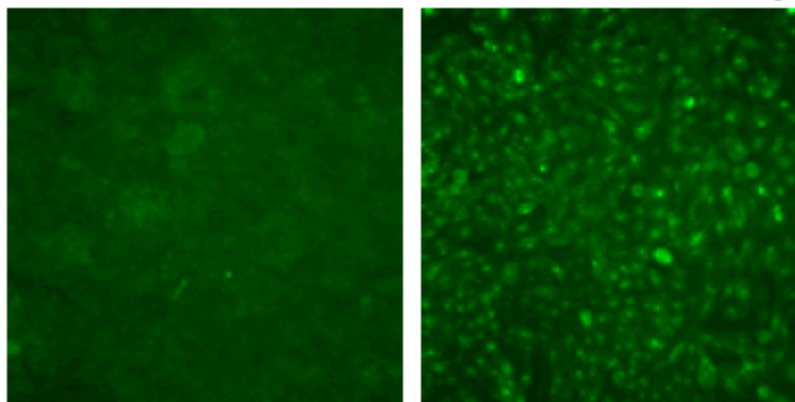


[View online »](#)

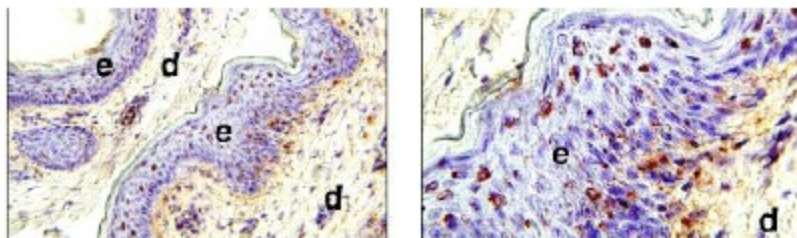
Product images:



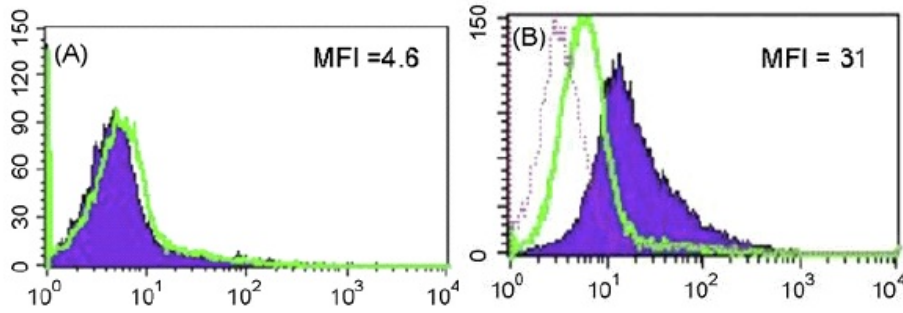
IHC staining of human skin frozen section with clone 310F7 (DX0361)



IF 310F7.02 staining of CHO cells transfected (right) or not (left) with **mouse** Langerin



Porcine skin cryosections were restained with 310F7.02A:16X; B:40X; e: epidermis; d: dermis



FACS staining with 310F7.02 of cells derived from overnight culture of **porcine** skin biopsies permeabilized (B) or not (A).