

Product datasheet for **DDX0361B-100**

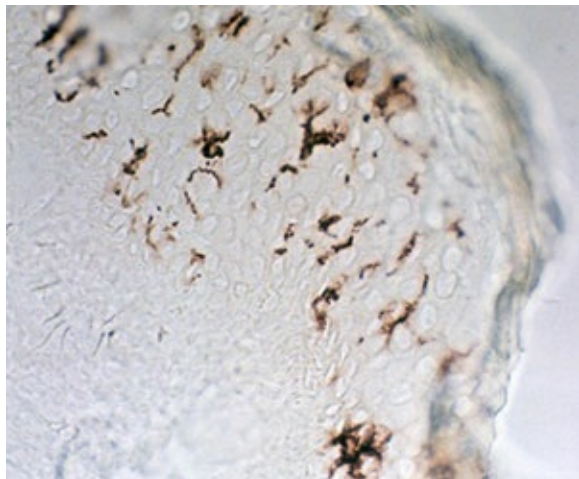
Langerin (CD207) Mouse Monoclonal Antibody [Clone ID: 310F7.02/HD26]

Product data:

Product Type:	Primary Antibodies
Clone Name:	310F7.02/HD26
Applications:	ELISA, FC, IHC
Recommended Dilution:	IHC, ELISA, Flow cytometry
Reactivity:	Human, Mouse, Porcine, Rat
Host:	Mouse
Isotype:	IgG1
Clonality:	Monoclonal
Immunogen:	mouse Langerin-transfected eukaryotic cells
Specificity:	mouse Langerin (intracellular epitope). Species cross- reactivity: rat, human, pig
Formulation:	Label: Biotin State: 100 µg in 200µl / 50 µg in 100 µl PBS 50% glycerol
Concentration:	lot specific
Purification:	QMA Hyper D ion exchange chromatography
Conjugation:	Biotin
Storage:	-20°C. KEEP CONTENTS STERILE: no preservative. <u>Coupled antibodies: glycerol protects from freezing.</u>
Gene Name:	CD207 molecule
Database Link:	Entrez Gene 50489 Human
Background:	Langerin/CD207 is a transmembrane C-type lectin receptor (CLR) of epidermal and mucosal Langerhans cells (LCs) that induces Birbeck granule formation. Langerin features a single carbohydrate recognition domain (CRD) with mannose-type specificity in its extracellular portion. Langerin is unique among the CLRs in that it contains an intracellular domain with a proline-rich motif. Langerin expression has not been reported outside the DC system. (Valladeau J et al, 2002 J. Immunol, 168 : 782-792) (Douillard P et al, 2005 J Invest Dermatol, 125: 983-994)
Synonyms:	CLEC4K, Dendritic Cell Marker



[View online »](#)

Product images:

IHC staining of human skin frozen section with clone 310F7 (DX0361)