

## Product datasheet for **DDX0361A546-100**

### Langerin (CD207) Mouse Monoclonal Antibody [Clone ID: 310F7.02/HD26]

#### Product data:

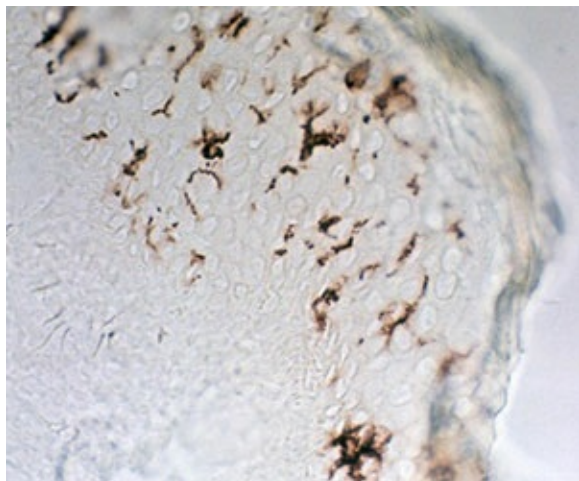
Product Type:	Primary Antibodies
Clone Name:	310F7.02/HD26
Applications:	IF
Recommended Dilution:	<b>IF</b>
Reactivity:	Human, Mouse, Porcine, Rat
Host:	Mouse
Isotype:	IgG1
Clonality:	Monoclonal
Immunogen:	mouse Langerin-transfected eukaryotic cells
Specificity:	Mouse Langerin (intracellular epitope). <b>Species cross-reactivity:</b> rat, human, pig
Formulation:	PBS 50% glycerol Label: Alexa Fluor 546
Concentration:	lot specific
Purification:	QMA Hyper D ion exchange chromatography
Conjugation:	Alexa Fluor 546
Storage:	<b>-20°C. KEEP CONTENTS STERILE: no preservative.</b> <b><u>Purified antibodies:</u> avoid repeated freeze/thaw cycles.</b> <b><u>Coupled antibodies:</u> glycerol protects from freezing.</b>
Gene Name:	CD207 molecule
Database Link:	<a href="#">Entrez Gene 50489 Human</a>
Background:	Langerin/CD207 is a transmembrane C-type lectin receptor (CLR) of epidermal and mucosal Langerhans cells (LCs) that induces Birbeck granule formation. Langerin features a single carbohydrate recognition domain (CRD) with mannose-type specificity in its extracellular portion. Langerin is unique among the CLRs in that it contains an intracellular domain with a proline-rich motif. Langerin expression has not been reported outside the DC system. (Valladeau J et al, 2002 J. Immunol, 168 : 782-792) (Douillard P et al, 2005 J Invest Dermatol, 125: 983-994)



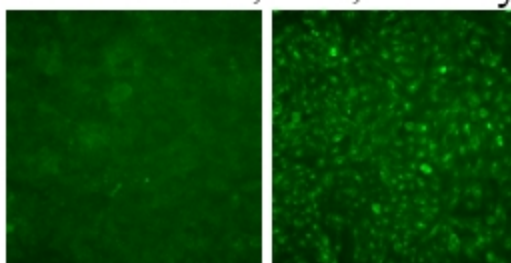
[View online »](#)

Synonyms: CLEC4K, Dendritic Cell Marker

### Product images:



IHC staining of human skin frozen section with clone 310F7 (DX0361)



310F7.02IF 310F7.02 staining of CHO cells transfected (right) or not (left) with **mouse** Langerin