

Product datasheet for **DDX0361A488-100**

Langerin (CD207) Mouse Monoclonal Antibody [Clone ID: 310F7.02/HD26]

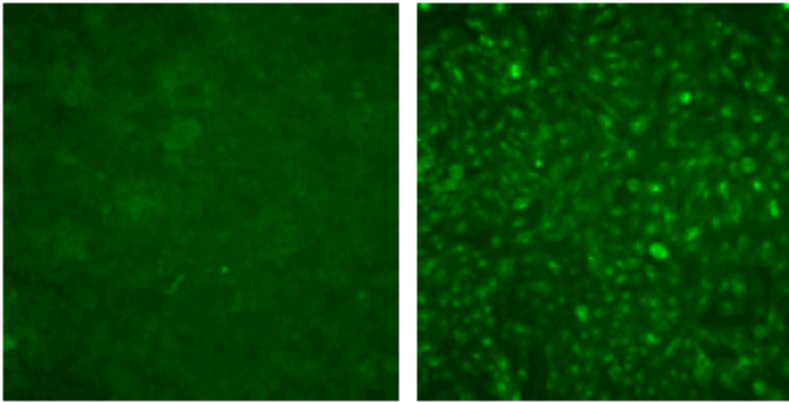
Product data:

Product Type:	Primary Antibodies
Clone Name:	310F7.02/HD26
Applications:	FC, IF
Recommended Dilution:	Intracellular Flow cytometry, IF
Reactivity:	Human, Mouse, Porcine, Rat
Host:	Mouse
Isotype:	IgG1
Clonality:	Monoclonal
Immunogen:	mouse Langerin-transfected eukaryotic cells
Specificity:	mouse Langerin (intracellular epitope)
Formulation:	PBS 50% glycerol Label: Alexa Fluor 488
Concentration:	lot specific
Purification:	QMA Hyper D ion exchange chromatography
Conjugation:	Alexa Fluor 488
Storage:	-20°C. KEEP CONTENTS STERILE: no preservative. <u>Purified antibodies:</u> avoid repeated freeze/thaw cycles. <u>Coupled antibodies:</u> glycerol protects from freezing.
Gene Name:	CD207 molecule
Database Link:	Entrez Gene 50489 Human
Background:	Langerin/CD207 is a transmembrane C-type lectin receptor (CLR) of epidermal and mucosal Langerhans cells (LCs) that induces Birbeck granule formation. Langerin features a single carbohydrate recognition domain (CRD) with mannose-type specificity in its extracellular portion. Langerin is unique among the CLRs in that it contains an intracellular domain with a proline-rich motif. Langerin expression has not been reported outside the DC system. (Valladeau J et al, 2002 J. Immunol, 168 : 782-792) (Douillard P et al, 2005 J Invest Dermatol, 125: 983-994)
Synonyms:	CLEC4K, Dendritic Cell Marker

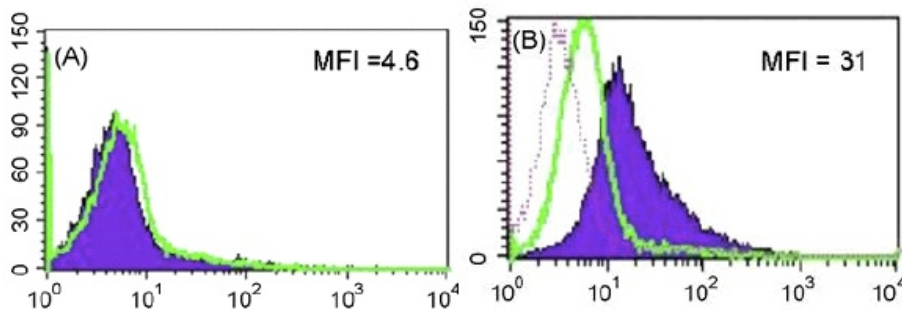


[View online »](#)

Product images:



IF 310F7.02 staining of CHO cells transfected (right) or not (left) with **mouse** Langerin



FACS staining with 310F7.02 of cells derived from overnight culture of **porcine** skin biopsies permeabilized (B) or not (A).