

## Product datasheet for **DDX0360P-100**

### Langerin (CD207) Mouse Monoclonal Antibody [Clone ID: 808E10.01]

#### Product data:

Product Type: Primary Antibodies  
Clone Name: 808E10.01  
Applications: FC, FN, IHC  
Recommend Dilution: **Flow cytometry, blocks HIVgp120, IHC.**

#### Usage recommendation:

\*This monoclonal antibody may be used between 5-20 µg/ml.  
\*Optimal dilution should be determined by each laboratory for each application.  
\*Coupled antibody: to maintain RT before use.

Reactivity: Human, Mouse  
Host: Mouse  
Isotype: IgG1  
Clonality: Monoclonal  
Immunogen: Human Langerin-transfected eukaryotic cells  
Specificity: Human Langerin (extracellular epitope).  
**Species cross-reactivity:** Mouse.

Formulation: Tris-NaCl pH 8  
State: Purified

Concentration: 0.5 mg/ml

Purification: QMA Hyper D ion exchange chromatography

Gene Name: CD207 molecule

Database Link: [Entrez Gene 50489 Human](#)

**Background:** Langerin/CD207 is a transmembrane C-type lectin receptor (CLR) of epidermal and mucosal Langerhans cells (LCs) that induces Birbeck granule formation. Langerin features a single carbohydrate recognition domain (CRD) with mannose-type specificity in its extracellular portion. Langerin is unique among the CLRs in that it contains an intracellular domain with a proline-rich motif. Langerin expression has not been reported outside the DC system. (Valladeau J et al, 2002; J. Immunol., 168 : 782-779 ; Douillard P et al, 200; J. Invest. Dermatol., 125: 983-994)

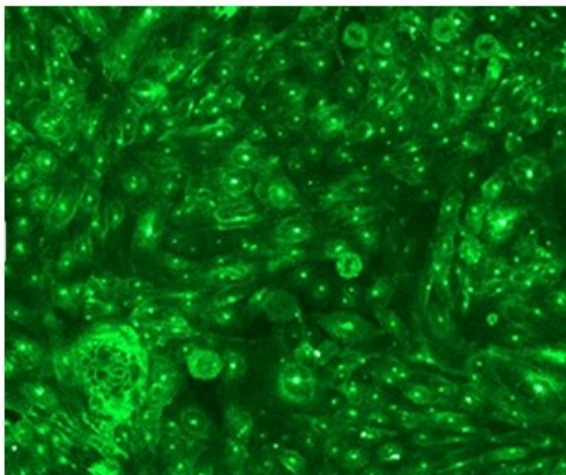


[View online »](#)

**Synonyms:** CLEC4K, Dendritic Cell Marker

**Note:** Protocol: **Langerin-gp120 blocking protocol:**  
Mock- and Langerin-transfected CHO cells are incubated with biotin-labelled gp160 (5µg/ml) and clone 808E10.01 at (1 to 10µg/ml) in PBS 45 min. at RT. Cells were washed in PBS 5min at 1600rpm, and stained with Streptavidin-PE 30 min at 4°C (DAKO). A last PBS wash is performed before Flow cytometry analysis.

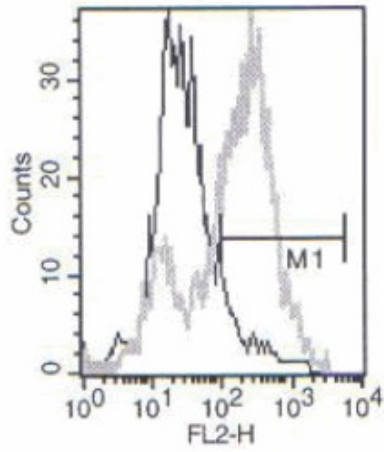
**Product images:**



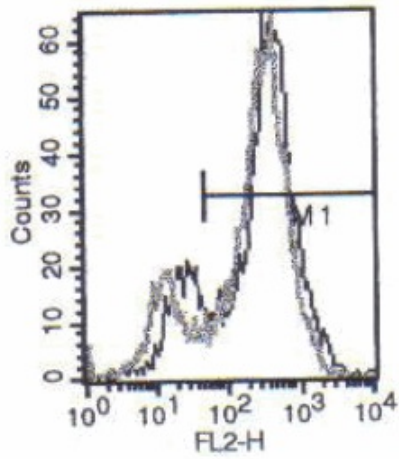
IF staining of Langerin-transfected CHO cells with 808E10 (DDX0360)



Human skin frozen section: Langerhans cells staining with 808E10.01-HRP



Blocking HIV-gp120 (808E10.01 anti-langerin clone)



Non -blocking anti-langerin clone