

Product datasheet for **DDX0360A488-100**

Langerin (CD207) Mouse Monoclonal Antibody [Clone ID: 808E10.01]

Product data:

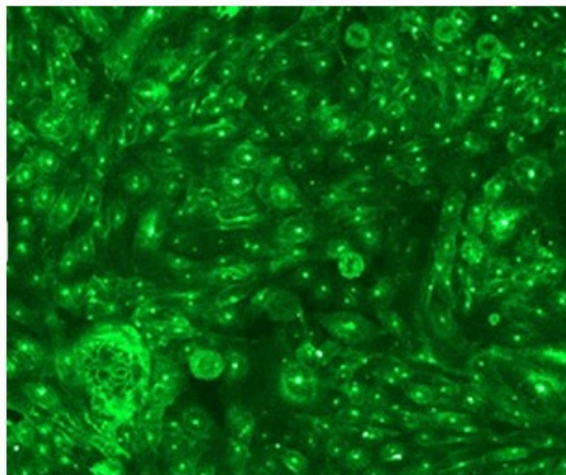
Product Type:	Primary Antibodies
Clone Name:	808E10.01
Applications:	FC, IF
Recommend Dilution:	Surface Flow cytometry, IF
Reactivity:	Human, Mouse
Host:	Mouse
Isotype:	IgG1
Clonality:	Monoclonal
Immunogen:	human Langerin-transfected eukaryotic cells
Specificity:	Human Langerin (extracellular epitope). Species cross-reactivity: Mouse.
Formulation:	PBS 50% glycerol Label: Alexa Fluor 488
Concentration:	0.5 mg/ml
Purification:	QMA Hyper D ion exchange chromatography
Conjugation:	Alexa Fluor 488
Gene Name:	CD207 molecule
Database Link:	Entrez Gene 50489 Human
Background:	Langerin/CD207 is a transmembrane C-type lectin receptor (CLR) of epidermal and mucosal Langerhans cells (LCs) that induces Birbeck granule formation. Langerin features a single carbohydrate recognition domain (CRD) with mannose-type specificity in its extracellular portion. Langerin is unique among the CLRs in that it contains an intracellular domain with a proline-rich motif. Langerin expression has not been reported outside the DC system. (Valladeau J et al, 2002; J. Immunol., 168 : 782-779 ; Douillard P et al, 200; J. Invest. Dermatol., 125: 983-994).
Synonyms:	CLEC4K, Dendritic Cell Marker



[View online »](#)

Note: Protocol: **Langerin-gp120 blocking protocol:**
Mock- and Langerin-transfected CHO cells are incubated with biotin-labelled gp160 (5µg/ml) and clone 808E10.01 at (1 to 10µg/ml) in PBS 45 min. at RT. Cells were washed in PBS 5min at 1600rpm, and stained with Streptavidin-PE 30 min at 4°C (DAKO). A last PBS wash is performed before Flow cytometry analysis.

Product images:



IF staining of Langerin-transfected CHO cells with 808E10 (DDX0360)