

Product datasheet for **DDX0283P-100**

MMP12 Mouse Monoclonal Antibody [Clone ID: 703D10]

Product data:

Product Type:	Primary Antibodies
Clone Name:	703D10
Applications:	ELISA, FC, IHC
Recommend Dilution:	IHC and Elisa in human, intracellular flow cytometry in dog
Reactivity:	Canine, Human
Host:	Mouse
Isotype:	IgG1
Clonality:	Monoclonal
Immunogen:	Human recombinant HME-MMP12 produced in eukaryotic cells.
Specificity:	Human HME-MMP12. Species cross-reactivity: Dog.
Formulation:	100 µg in 200 µl / 50 µg in 100 µl tris-NaCl pH8 State: Purified
Concentration:	0.5 mg/ml
Purification:	QMA Hyper D ion exchange chromatography
Gene Name:	matrix metalloproteinase 12
Database Link:	Entrez Gene 4321 Human



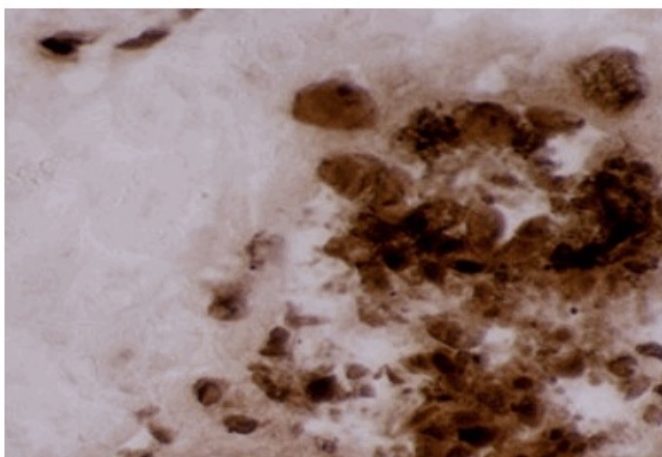
[View online »](#)

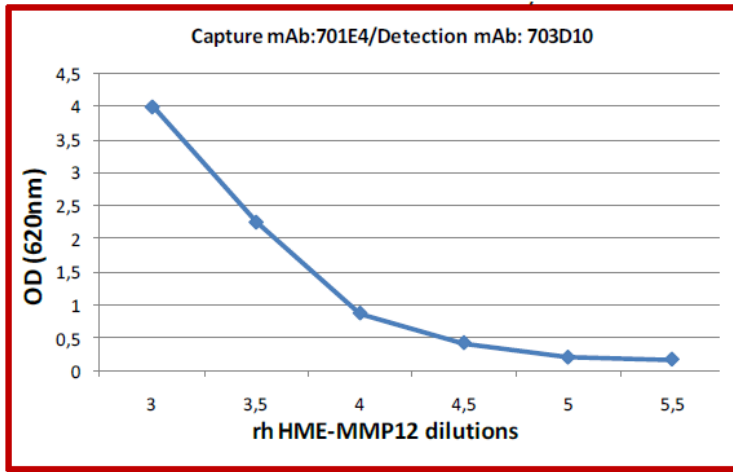
Background:

Proteins of the matrix metalloproteinase (MMP) family are involved in the breakdown of extracellular matrix in normal physiological processes. HME/MMP-12, also called metalloelastase, is reported only in few cells, including tissue macrophages and hypertrophic chondrocytes. MMP-12 is critical for invasion and destruction in pathologies such as aneurysm and emphysema. The predicted molecular mass of the HME proenzyme is 54 kDa. HME mRNA and protein were detected in human alveolar macrophages. Similar to murine macrophage metalloelastase, HME readily undergoes NH₂- and COOH-terminal processing to a mature 22 kDa form. Both recombinant expressed in Escherichia Coli and native HME derived from human alveolar macrophage conditioned media degraded insoluble elastin. HME is a unique human metalloproteinase that displays elastolytic activity and is expressed in alveolar macrophages; MMP-12 mediates smoke-induced inflammation by releasing TNF α from macrophages, with subsequent endothelial activation, neutrophil influx, and proteolytic matrix breakdown caused by neutrophil-derived proteases. (Demedts IK et al, 2006; Thorax, 61:196-201).

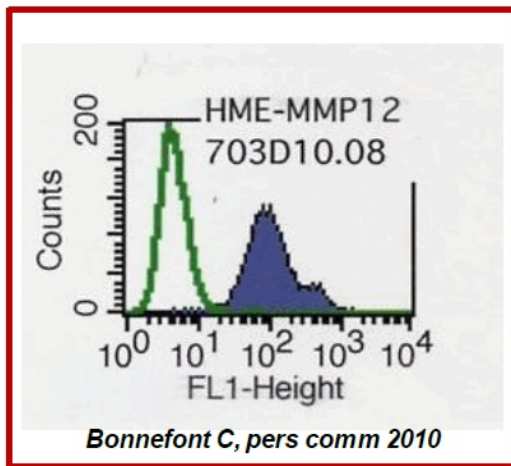
Synonyms:

Macrophage metalloelastase, HME, ME, Matrix metalloproteinase-12, MMP12, Macrophage elastase

Product images:



Human HME-MMP12 ELISA assay



Intracellular FACS on a canine line