

Product datasheet for **DDX0208A647-100**

DC SIGN (CD209) Mouse Monoclonal Antibody [Clone ID: 120C8]

Product data:

Product Type:	Primary Antibodies
Clone Name:	120C8
Applications:	FC
Recommend Dilution:	DDX0208P-50 / DDX0208P-100 purified: Surface Flow cytometry, Inhibition of HIVgp120 binding to DC-SIGN DDX0208A488-50 / DDX0208A488-100 Alexa-Fluor®488: Surface Flow cytometry , IF DDX0208A647-50 / DDX0208A647-100 Alexa-Fluor®647: Surface Flow cytometry. DDX0208B-50 DDX0208B-100 Biotin (on request): Surface Flow cytometry. Usage recommendation: *This monoclonal antibody may be used between 3-20 µg/ml. *Optimal dilution should be determined by each laboratory for each application. *Coupled antibody: to maintain RT before use.
Reactivity:	Human
Host:	Mouse
Isotype:	IgG2b
Clonality:	Monoclonal
Immunogen:	HeLa cells stably transfected-with human DC-SIGN.
Specificity:	Human (epitope in extracellular domain). Species cross-reactivity: no cross-reactivity with Human L-SIGN.
Formulation:	Purified: 100 µg in 200 µl / 50 µg in 100 µl Tris-NaCl pH 8. Coupled: 100 µg in 200 µl / 50 µg in 100 µl PBS 50% glycerol. Label: Alexa Fluor 647
Concentration:	0.5 mg/ml
Conjugation:	Alexa Fluor 647
Gene Name:	CD209 molecule
Database Link:	Entrez Gene 30835 Human



[View online »](#)

Background:

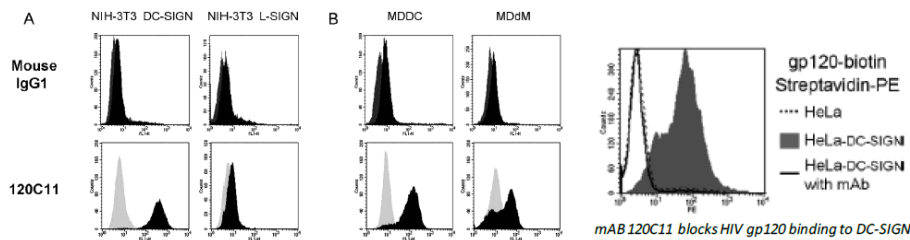
DC-SIGN (“DC Specific, ICAM-3 Grabbing, Nonintegrin”) / CD209 is a type II membrane protein with an external mannose-binding C-type lectin domain. DC-SIGN is expressed by immature and mature dendritic cells (DC). In the skin, DC-SIGN+ DC are exclusively located in the dermis. DC-SIGN binds to ICAM-3 on resting T cells, establishing DC-T cell contact and adaptive immunity. DC-SIGN is a high affinity receptor for HIV gp120, allowing HIV capture and transmission to CD4+ T cells. In addition to HIV, DC-SIGN is a receptor for a number of other viral and cellular pathogens including Mycobacterium tuberculosis, and is a major player in microbial evasion of the immune system.
(Geijtenbeek, T and al, Cell, 2000; 100: 587-597; van Kooyk Y and al, Nat. Rev. Immunol., 2003; 3: 697-709).

Synonyms:

DCSIGN1, DCSIGN, DC-SIGN1, CLEC4L, Dendritic Cell Marker

Note:
Protocol: HIV-gp120 blocking protocol:

HeLa and HeLa-DC-SIGN were incubated with 100µl of DC-SIGN antibody (3-10µg/ml) during 30’ at 37°C. Cells were washed with culture medium during 5’ at 1600 rpm, and stained with biotin-gp120 (5µg/ml) during 1h at 37°C (Immunodiagnostics). Cells were washed with culture medium during 5’ at 1600 rpm followed by staining with PE-conjugated streptavidin (dilution 1/20) during 30’ at 4°C (Becton Dickinson). After a last washing, cells were analyzed by flow cytometry.

Product images:


Canard B et al, Immunol Lett, 2011

mAb 120C11 blocks HIV gp120 binding to DC-SIGN

MDDC (monocyte-derived dendritic cells); MDDM (monocyte-derived dermal macrophages)