

Product datasheet for **DDX0207A488-100**

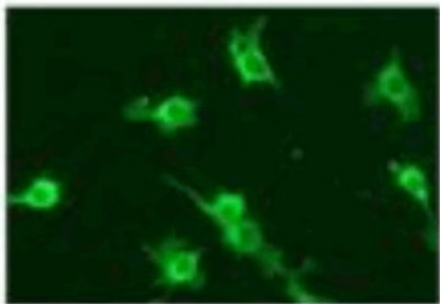
DC SIGN (CD209) Mouse Monoclonal Antibody [Clone ID: 109H12.03]

Product data:

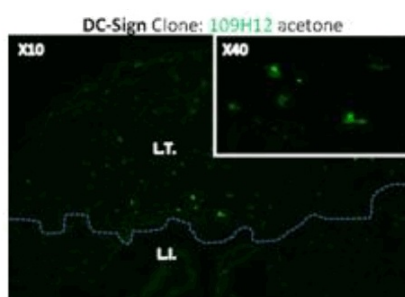
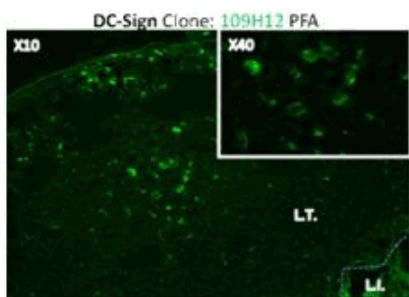
Product Type:	Primary Antibodies
Clone Name:	109H12.03
Applications:	FC, IF, IHC
Recommend Dilution:	Surface Flow cytometry, IHC, IF
Reactivity:	Human, Mouse
Host:	Mouse
Isotype:	IgG2a
Clonality:	Monoclonal
Immunogen:	Human DC-SIGN-transfected HeLa cells.
Specificity:	Human DC-SIGN. Species cross-reactivity: L-SIGN, Mouse DC-SIGN
Formulation:	PBS 50% glycerol Label: Alexa Fluor 488
Concentration:	0.5 mg/ml
Conjugation:	Alexa Fluor 488
Gene Name:	CD209 molecule
Database Link:	Entrez Gene 30835 Human
Background:	DC-SIGN ("DC Specific, ICAM-3 Grabbing, Nonintegrin")/CD209 and liver/lymph node-specific ICAM-3-grabbing nonintegrin (L-SIGN) (CD299/DC-SIGNR for DC-SIGN-related molecule; DC-SIGN2) are closely related genes that map to chromosome 19p13.3. Both genes encode a member of the C-type lectin family of type II transmembrane proteins. The two receptors are 77% identical at the amino acid level, have similar ligands. They are expressed in different tissues. Both receptors have been shown to interact with ICAM-3 DC-SIGN is a high affinity receptor for HIV gp120 (<i>Soilleux EJ. 2003, Clinical Science 104, 437-; Dakappagari N., et al. 2006, The J Immunol, 176, 426; Geijtenbeeck T.B., et al. 2000, Cell, 100, 57 ; .Bashirova A. et al., 2001, J.Exp. Med., 193, 671 ; Canard B et al, Immunol Lett. 2011, 135(1-2):165-72 ; Rochereau N. et al, Vaccine 201; Kwan WH et al, PLoS Negl.Trop.Dis, 2:e311, 2008).</i>
Synonyms:	DCSIGN1, DCSIGN, DC-SIGN1, CLEC4L, Dendritic Cell Marker



[View online »](#)

Product images:

IF staining of L-SIGN-transfected cells with 109H12.03.



PFA or acetone fixed murine intestine cryosections stained with 109H12 (Rachereau N et al, Vaccine 2011).