

## Product datasheet for **DDX0205A488-100**

### DC SIGN (CD209) Mouse Monoclonal Antibody [Clone ID: 102F10.04]

#### Product data:

Product Type:	Primary Antibodies
Clone Name:	102F10.04
Applications:	FC
Recommend Dilution:	<b><u>DDX0205P-50 / DDX0205P-100 Purified:</u></b> Surface flow cytometry, internalization. <b><u>DDX0205A488-50 / DDX0205A488-100 Alexa-fluor®488:</u></b> Surface Flow cytometry. <b><u>DDX0205A546-50 / DDX0205A546-100 Alexa- fluor®546:</u></b> Immunofluorescence. <b><u>DDX0245647-50 / DDX0205A647-100 Alexa- fluor®647:</u></b> Surface Flow cytometry <b>Usage recommendation:</b> *This monoclonal antibody may be used between 5-20 µg/ml.
Reactivity:	Human
Host:	Mouse
Isotype:	IgG2b
Clonality:	Monoclonal
Immunogen:	HeLa cells stably transfected-with human DC-SIGN.
Specificity:	Human DC-SIGN. <b>Cross-reactivity:</b> Human L-SIGN : positive.
Formulation:	<b><u>Purified:</u></b> 100 µg in 200µl / 50 µg in 100 µl Tris-NaCl pH 8 <b><u>Coupled:</u></b> 100 µg in 200 µl / 50 µg in 100 µl PBS 50% glycerol Label: Alexa Fluor 488
Concentration:	0.5 mg/ml
Conjugation:	Alexa Fluor 488
Gene Name:	CD209 molecule
Database Link:	<a href="#">Entrez Gene 30835 Human</a>



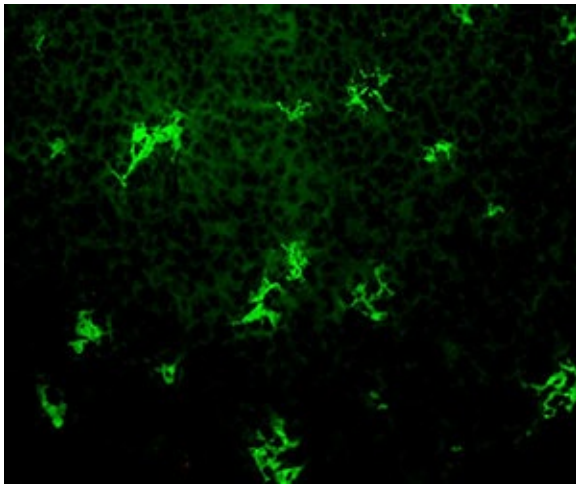
[View online »](#)

**Background:**

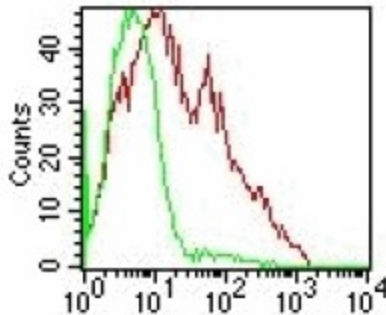
DC-SIGN (DC Specific, ICAM-3 Grabbing, Nonintegrin) / CD209 and liver/lymph node-specific ICAM-3-grabbing nonintegrin (L-SIGN) (CD299/DC-SIGNR for DC-SIGN-related molecule; DC-SIGN2) are closely related genes that map to chromosome 19p13.3. Both genes encode a member of the C-type lectin family of type II transmembrane proteins. The two receptors are 77% identical at the amino acid level, have similar ligands. DC-SIGN is expressed on dendritic cells and macrophages. L-SIGN is found in the endothelial cells of liver, lymph nodes, and placenta and is absent on DCs and macrophages. Both receptors have been shown to interact with ICAM-3. DC-SIGN is a high affinity receptor for HIV gp120, (Soilleux, EJ. 2003, Clinical Science 104, 437; Dakappagari N., et al. 2006, J Immunol, 176, 426; Geijtenbeek T.B., et al. 2000, Cell, 100, 575 ; Bashirova A. et al., 2001, J.Exp. Med., 193, 671) Antibodies have been selected with NIH3T3 transfected cells either with L-SIGN, either with DC-SIGN.

**Synonyms:**

DCSIGN1, DCSIGN, DC-SIGN1, CLEC4L, Dendritic Cell Marker

**Product images:**

IF staining of human tonsil with 102F10 (DDX0205)



DC-SIGN receptor internalization: Red 4°C expression;green 37°C