

Product datasheet for **DDX0203A488-100**

DC SIGN (CD209) Mouse Monoclonal Antibody [Clone ID: 103G2.07]

Product data:

Product Type:	Primary Antibodies
Clone Name:	103G2.07
Applications:	FC
Recommend Dilution:	<u>DDX0203P-50 / DDX0203P-100 Purified:</u> FACS surface, ImmunoHistoChemistry frozen sections, ImmunoHistoChemistry paraffin sections. <u>DDX0203A488-50 / DDX0203A488-100 Alexa-fluor®488:</u> Surface Flow cytometry, Immunofluorescence. <u>DDX0203A546-50 / DDX0203A546-100 Alexa- fluor®546:</u> Immunofluorescence. <u>DDX0203A647-50 / DDX0203A647-100 Alexa- fluor®647:</u> Surface Flow cytometry <u>DDX0203B-50 / DDX0203B-100 Biotin (on request):</u> FACS surface, ImmunoHistoChemistry frozen sections, ImmunoHistoChemistry paraffin sections. Usage recommendation: *This monoclonal antibody may be used between 5-20 µg/ml.
Reactivity:	Human
Host:	Mouse
Isotype:	IgG1
Clonality:	Monoclonal
Immunogen:	HeLa cells stably transfected-with human DC-SIGN.
Specificity:	Human DC-SIGN. Species cross- reactivity: Weak expression on NIH3T3-transfected LSIGN.
Formulation:	<u>Purified:</u> 100 µg in 200µl / 50 µg in 100 µl Tris-NaCl pH 8. <u>Coupled:</u> 100 µg in 200µl / 50 µg in 100 µl PBS 50% glycerol. Label: Alexa Fluor 488
Concentration:	0.5 mg/ml
Conjugation:	Alexa Fluor 488
Gene Name:	CD209 molecule
Database Link:	Entrez Gene 30835 Human



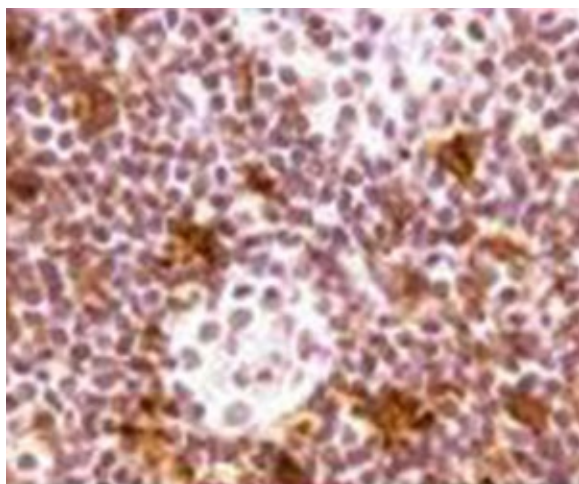
[View online »](#)

Background:

DC-SIGN (“DC Specific, ICAM-3 Grabbing, Nonintegrin”)/CD209 and liver/lymph node-specific ICAM-3-grabbing nonintegrin (L-SIGN) (CD299/DC-SIGNR for DC-SIGN-related molecule; DC-SIGN2) are closely related genes that map to chromosome 19p13.3. Both genes encode a member of the C-type lectin family of type II transmembrane proteins. The two receptors are 77% identical at the amino acid level, have similar ligands. They are expressed in different tissues. DC-SIGN is expressed on dendritic cells and macrophages. L-SIGN is found in the endothelial cells of liver, lymph nodes, and placenta and is absent on DCs and macrophages. Both receptors have been shown to interact with ICAM-3 DC-SIGN is a high affinity receptor for HIV gp120 (Soilleux EJ. 2003, Clinical Science 104, 437-; Dakappagari N., et al. 2006, The J Immunol, 176, 426; Geijtenbeeck T.B., et al. 2000, Cell, 100, 57 ; .Bashirova A. et al., 2001, J.Exp. Med., 193, 671).

Synonyms:

DCSIGN1, DCSIGN, DC-SIGN1, CLEC4L, Dendritic Cell Marker

Product images:

Formalin-fixed paraffin-embedded human tonsil stained with clone 103G2 (DX0203). DC-SIGN is visualized by brown labeling with DAB