

## Product datasheet for **DDX0202B-100**

### DC SIGN (CD209) Mouse Monoclonal Antibody [Clone ID: 102E11.06]

#### Product data:

Product Type:	Primary Antibodies
Clone Name:	102E11.06
Applications:	FC, IHC
Recommend Dilution:	<b><u>DDX0202P-50 / DDX0202P-100 Purified</u></b> : FACS surface, ImmunoHistoChemistry frozen sections, ImmunoHistoChemistry paraffin sections (formol). <b><u>DDX0202A488-50 / DDX0202A488-100 Alexa-fluor®488</u></b> : Surface Flow cytometry, Immunofluorescence. <b><u>DDX0202A546-50 / DDX0202A546-100 Alexa-fluor®546</u></b> : Immunofluorescence. <b><u>DDX0202A647-50 / DDX0202A647-100 Alexa-fluor®647</u></b> : Surface Flow cytometry <b><u>DDX0202B-50 / DDX0202B-100 Biotin (on request)</u></b> : FACS surface, ImmunoHistoChemistry frozen sections, ImmunoHistoChemistry paraffin sections. <b>Usage recommendation:</b> *This monoclonal antibody may be used between 1-20 µg/ml.
Reactivity:	Canine, Human
Host:	Mouse
Isotype:	IgG2b
Clonality:	Monoclonal
Immunogen:	HeLa cells stably transfected-with human DC-SIGN.
Specificity:	human L-SIGN and human DC-SIGN. <b>Species cross-reactivity:</b> human L-SIGN , dog.
Formulation:	<b><u>Purified</u></b> : 100 µg in 200µl / 50 µg in 100 µl Tris-NaCl pH 8. <b><u>Coupled</u></b> : 100 µg in 200 µl / 50 µg in 100 µl PBS 50% glycerol. Label: Biotin
Concentration:	0.5 mg/ml
Conjugation:	Biotin
Gene Name:	CD209 molecule
Database Link:	<a href="#">Entrez Gene 30835 Human</a>



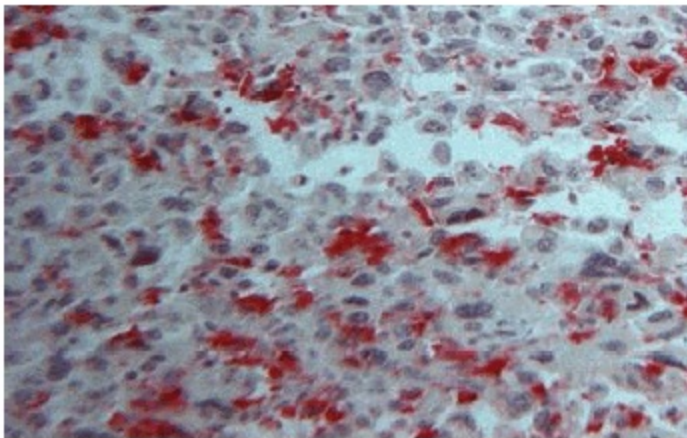
[View online »](#)

**Background:**

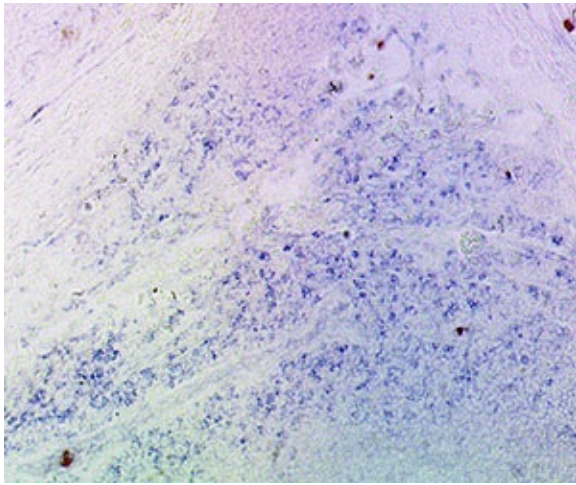
DC-SIGN (“DC Specific, ICAM-3 Grabbing, Nonintegrin”) / CD209 and liver/lymph node-specific ICAM-3-grabbing nonintegrin (L-SIGN) (CD299/DC-SIGNR for DC-SIGN-related molecule; DC-SIGN2) are closely related genes that map to chromosome 19p13.3. Both genes encode a member of the C-type lectin family of type II transmembrane proteins. The two receptors are 77% identical at the amino acid level, have similar ligands. They are expressed in different tissues. DC-SIGN is expressed on dendritic cells and macrophages. L-SIGN is found in the endothelial cells of liver, lymph nodes, and placenta and is absent on DCs and macrophages. Both receptors have been shown to interact with ICAM-3 DC-SIGN is a high affinity receptor for HIV gp120, (Soilleux EJ. 2003, Clinical Science 104, 437; Dakappagari N., et al. 2006, The Journal of Immunology, 176, 426-; Geijtenbeeck T.B., et al. 2000, Cell, 100, 575). Bashirova A. et al., 2001, J.Exp. Med., 193, 671). Antibodies have been selected with NIH3T3 transfected cells with either L-SIGN or DC-SIGN.

**Synonyms:**

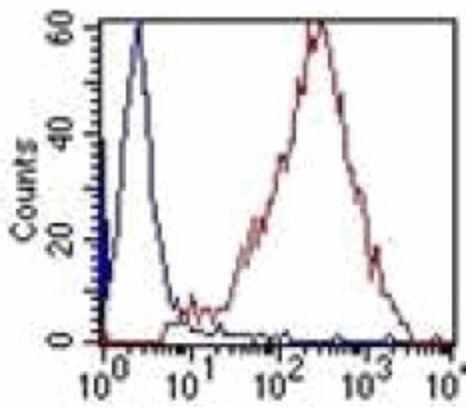
DCSIGN1, DCSIGN, DC-SIGN1, CLEC4L, Dendritic Cell Marker

**Product images:**

IHC staining paraffin-embedded human tonsil section with 102E11.06



IHC staining of human tonsil frozen section with clone 102E11 (DX0202)



FACS staining of DC-SIGN-transfected HeLa cells with 102E11.06