

Product datasheet for **DDX0202A647-100**

DC SIGN (CD209) Mouse Monoclonal Antibody [Clone ID: 102E11.06]

Product data:

Product Type:	Primary Antibodies
Clone Name:	102E11.06
Applications:	FC
Recommend Dilution:	<u>DDX0202P-50 / DDX0202P-100 Purified</u> : FACS surface, ImmunoHistoChemistry frozen sections, ImmunoHistoChemistry paraffin sections (formol). <u>DDX0202A488-50 / DDX0202A488-100 Alexa-fluor®488</u> : Surface Flow cytometry, Immunofluorescence. <u>DDX0202A546-50 / DDX0202A546-100 Alexa- fluor®546</u> : Immunofluorescence. <u>DDX0202A647-50 / DDX0202A647-100 Alexa- fluor®647</u> : Surface Flow cytometry <u>DDX0202B-50 / DDX0202B-100 Biotin (on request)</u> : FACS surface, ImmunoHistoChemistry frozen sections, ImmunoHistoChemistry paraffin sections. Usage recommendation: *This monoclonal antibody may be used between 1-20 µg/ml.
Reactivity:	Canine, Human
Host:	Mouse
Isotype:	IgG2b
Clonality:	Monoclonal
Immunogen:	HeLa cells stably transfected-with human DC-SIGN.
Specificity:	human L-SIGN and human DC-SIGN. Species cross-reactivity: human L-SIGN , dog.
Formulation:	<u>Purified</u> : 100 µg in 200µl / 50 µg in 100 µl Tris-NaCl pH 8. <u>Coupled</u> : 100 µg in 200 µl / 50 µg in 100 µl PBS 50% glycerol. Label: Alexa Fluor 647
Concentration:	0.5 mg/ml
Conjugation:	Alexa Fluor 647
Gene Name:	CD209 molecule
Database Link:	Entrez Gene 30835 Human



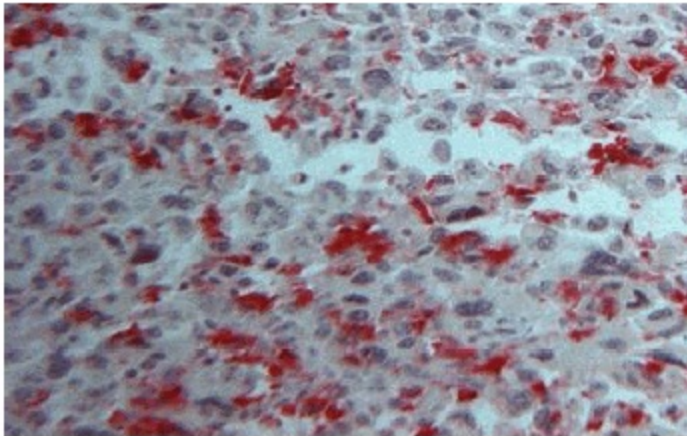
[View online »](#)

Background:

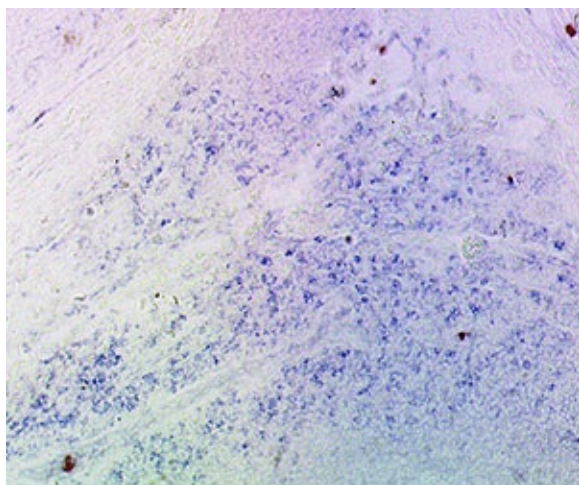
DC-SIGN (“DC Specific, ICAM-3 Grabbing, Nonintegrin”) / CD209 and liver/lymph node-specific ICAM-3-grabbing nonintegrin (L-SIGN) (CD299/DC-SIGNR for DC-SIGN-related molecule; DC-SIGN2) are closely related genes that map to chromosome 19p13.3. Both genes encode a member of the C-type lectin family of type II transmembrane proteins. The two receptors are 77% identical at the amino acid level, have similar ligands. They are expressed in different tissues. DC-SIGN is expressed on dendritic cells and macrophages. L-SIGN is found in the endothelial cells of liver, lymph nodes, and placenta and is absent on DCs and macrophages. Both receptors have been shown to interact with ICAM-3 DC-SIGN is a high affinity receptor for HIV gp120, (Soilleux EJ. 2003, Clinical Science 104, 437; Dakappagari N., et al. 2006, The Journal of Immunology, 176, 426-; Geijtenbeeck T.B., et al. 2000, Cell, 100, 575). Bashirova A. et al., 2001, J.Exp. Med., 193, 671). Antibodies have been selected with NIH3T3 transfected cells with either L-SIGN or DC-SIGN.

Synonyms:

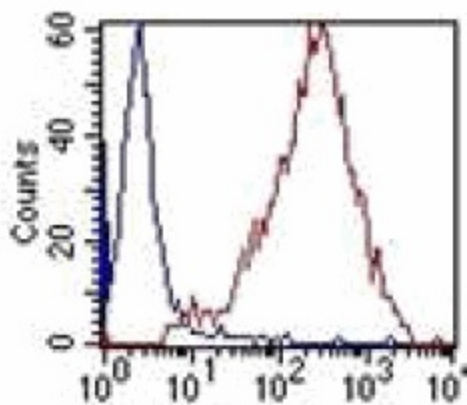
DCSIGN1, DCSIGN, DC-SIGN1, CLEC4L, Dendritic Cell Marker

Product images:

IHC staining paraffin-embedded human tonsil section with 102E11.06



IHC staining of human tonsil frozen section with clone 102E11 (DX0202)



FACS staining of DC-SIGN-transfected HeLa cells with 102E11.06