

Product datasheet for **DDX0201P-100**

DC SIGN (CD209) (Extracell. Dom.) Mouse Monoclonal Antibody [Clone ID: 128G8.43]

Product data:

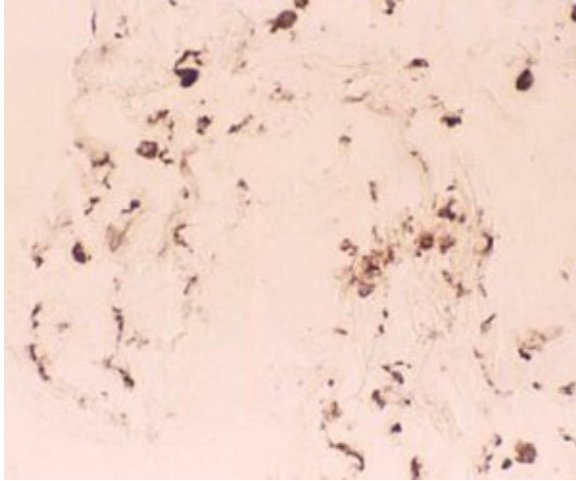
Product Type:	Primary Antibodies
Clone Name:	128G8.43
Applications:	FC, IHC, WB
Recommend Dilution:	Antigen uptake, FACS surface, ImmunoHistoChemistry frozen sections, Western Blot.
Reactivity:	Human, Sheep
Host:	Mouse
Isotype:	IgG1
Clonality:	Monoclonal
Immunogen:	human (GMCSF + TNF) DC subset.
Specificity:	Human (epitope in extracellular domain). Species cross-reactivity: Sheep.
Formulation:	Purified: 100 µg in 200 µl / 50 µg in 100 µl Tris-NaCl pH 8 State: Purified
Concentration:	0.5 mg/ml
Purification:	QMA Hyper D ion exchange chromatography
Gene Name:	CD209 molecule
Database Link:	Entrez Gene 30835 Human
Background:	<p>We have generated an antibody recognizing an antigen which has a tissular distribution and a size (western blot) identical to DC-SIGN. This antibody does not recognize DC-SIGN 1 expressed in HeLa cells. DCSIGN ("DC Specific, ICAM-3 Grabbing, Nonintegrin") / CD209 is a type II membrane protein with an external mannose-binding C-type lectin domain, DC-SIGN is expressed by immature and mature dendritic cells (DC). In the skin, DC-SIGN+ DC are exclusively located in the dermis. DC-SIGN binds to ICAM-3 on resting T cells, establishing DC-T cell contact and adaptive immunity. DC-SIGN is a high affinity receptor for HIV gp120, allowing HIV capture and transmission to CD4+ T cells. In addition to HIV, DC-SIGN is a receptor for a number of other viral and cellular pathogens including Mycobacterium Tuberculosis, and is a major player in microbial evasion of the immune system.</p> <p><i>(Geijtenbeek, T and al, Cell; 2000; 100: 587-597; van Kooyk Y and al, Nat. Rev. Immunol.; 2003; 3: 697- 709)</i></p>



[View online »](#)

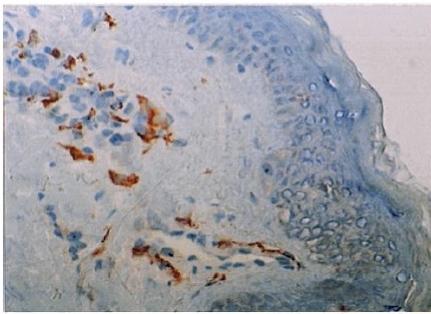
Synonyms: DCSIGN1, DCSIGN, DC-SIGN1, CLEC4L, Dendritic Cell Marker

Product images:

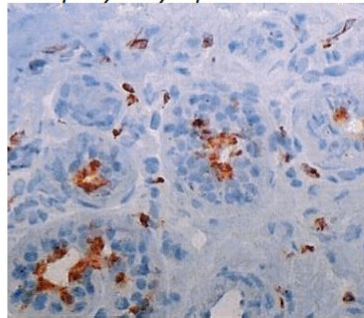


IHC staining of human lung frozen section with clone 128G8 (DX0201)

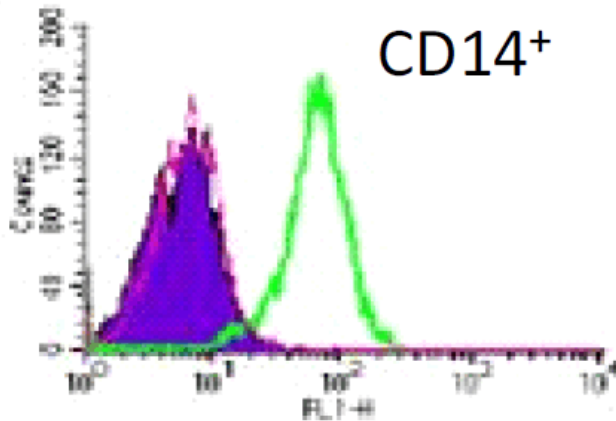
epidermis



Deep layer: lymphatic vessels



Frozen serial sections of human skin stained with 128G8



DC-SIGN like expression on human monocyte-derived DCs subsets