

## Product datasheet for **DDX0195A546-100**

### LAMP3 Mouse Monoclonal Antibody [Clone ID: 208B5]

#### Product data:

Product Type:	Primary Antibodies
Clone Name:	208B5
Applications:	FC, IHC
Recommend Dilution:	<b><u>DDX0195P-50 / DDX0195P-100 Purified</u></b> : FACS intracellular, ImmunoHistoChemistry frozen sections. <b><u>DDX0195A488-50 / DDX0195A488-100 Alexa-fluor@488</u></b> : Intra Flow cytometry for mouse and human. <b><u>DDX0195A546-50 / DDX0195A546-100 Alexa-fluor@546</u></b> : FACS intracellular, ImmunoHistoChemistry frozen sections. <b><u>DDX0195A647-50 / DDX0195A647-100 Alexa-fluor@647</u></b> : Intra Flow cytometry for mouse and human. <b><u>DDX0195B-50 / DDX0195B-100 Biotin</u></b> : FACS intracellular, ImmunoHistoChemistry frozen sections.
	<b>Usage recommendation:</b> *This monoclonal antibody may be used between 5-10 µg/ml.
Reactivity:	Human, Mouse
Host:	Mouse
Isotype:	IgG3
Clonality:	Monoclonal
Immunogen:	Recombinant Murine DC-LAMP
Specificity:	Murine DC-LAMP (epitope in intracytoplasmic domain). <b>Species cross-reactivity:</b> Human.
Formulation:	<b><u>Purified</u></b> : 100 µg in 200 µl / 50 µg in 100 µl Tris-NaCl pH 8. <b><u>Coupled</u></b> : 100 µg in 200 µl / 50 µg in 100 µl PBS 50% glycerol. Label: Alexa Fluor 546
Concentration:	0.5 mg/ml
Purification:	QMA Hyper D Ion exchange chromatography
Conjugation:	Alexa Fluor 546
Gene Name:	lysosomal associated membrane protein 3



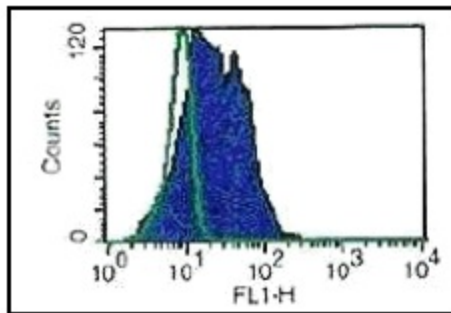
[View online »](#)

Database Link: [Entrez Gene 27074 Human](#)

**Background:** The dendritic cell lysosomal-associated membrane protein (DC-LAMP)/CD208 is a type I integral transmembrane glycoprotein mostly homologous to CD68, of about 45 kDa in the mouse and 90 kDa in human (due to extensive glycosylation), with a bipartite C-terminal structure divided by a serine/proline rich region, a transmembrane domain and a conserved tyrosine-based lysosomal targeting motif in its cytoplasmic tail. DC-LAMP is specifically expressed by human DCs upon activation. However, its mouse counterpart has not been detected in mature DCs. DC-LAMP is constitutively expressed by mouse. Confocal and immunoelectron microscopy has shown that mouse DC-LAMP protein co-localizes with lbn180, a specific marker for the limiting membrane of lamellar bodies that contains lung surfactant protein B (*Salaun B et al, 2004; Eur. J. Immunol., 33: 2619-29*).

**Synonyms:** DCLAMP, DC-LAMP, TSC403, Dendritic Cell Marker

**Product images:**



Intracellular flow cytometry with anti-DC-LAMP at 5µg/ml on human monocyte-derived DC GM+ IL4 (24h in LPS)