

Product datasheet for **DDX0193A647-100**

LAMP3 Mouse Monoclonal Antibody [Clone ID: 109G3]

Product data:

Product Type:	Primary Antibodies
Clone Name:	109G3
Applications:	FC
Recommend Dilution:	<u>DDX0193P-50 / DDX0193P-100 Purified:</u> FACS intracellular, ImmunoHistoChemistry frozen sections. <u>DDX0193A488-50 / DDX0193A488-100</u> Alexa-fluor®488: FACS intracellular, Immunofluorescence. <u>DDX0193A546-50 / DDX0193A546-100</u> Alexa-fluor®546: Immunofluorescence. <u>DDX0193A647-50 / DDX0193A647-100</u> Alexa-fluor®647: FACS intracellular. <u>DDX0193B-50 / DDX0193B-100</u> Biotin (on request): FACS intracellular, ImmunoHistoChemistry frozen sections.
Reactivity:	Human
Host:	Mouse
Isotype:	IgG1
Clonality:	Monoclonal
Immunogen:	Human DC-LAMP alkaline phosphatase fusion protein.
Specificity:	Human DC-LAMP (epitope in intracytoplasmic domain).
Formulation:	<u>Purified:</u> 100 µg in 200µl / 50 µg in 100 µl Tris-NaCl pH 8. <u>Coupled:</u> 100 µg in 200µl / 50 µg in 100 µl PBS 50% glycerol Label: Alexa Fluor 647
Concentration:	0.5 mg/ml
Purification:	QMA Hyper D ion exchange chromatography
Conjugation:	Alexa Fluor 647
Gene Name:	lysosomal associated membrane protein 3
Database Link:	Entrez Gene 27074 Human



[View online »](#)

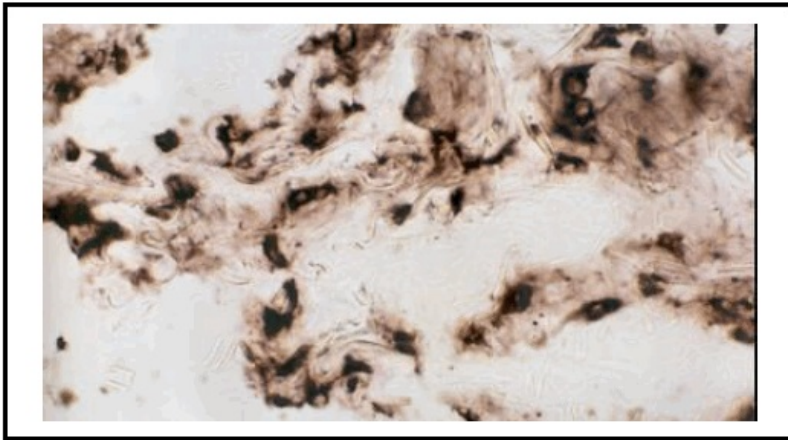
Background:

The dendritic cell lysosomal-associated membrane protein (DC-LAMP)/CD208 is a type I integral transmembrane glycoprotein mostly homologous to CD68, of about 45 kDa in the mouse and 90 kDa in human (due to extensive glycosylation), with a bipartite C-terminal structure divided by a serine/proline rich region, a transmembrane domain and a conserved tyrosine-based lysosomal targeting motif in its cytoplasmic tail. Initially cloned as a specific marker of human mature dendritic cells (DCs), DC-LAMP has been subsequently shown to be expressed in alveolar type II pneumocytes. In both cell types, the molecule is found in the limiting membrane of intracellular multi-lamellar bodies, known as MIIC (MHC class II compartments) in human mature DC and as lung surfactant-containing lamellar bodies in type II pneumocytes. In the latter cell type, DC-LAMP expression is also detected at the cell surface.

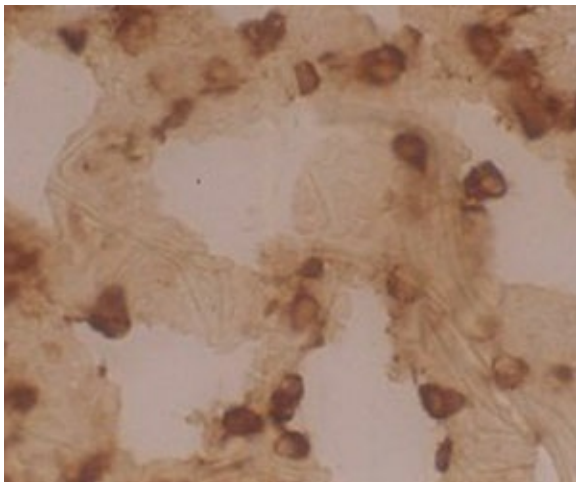
(de Saint-Vis B et al, 1998 ; Immunity ; 9: 325-336)

Synonyms:

DCLAMP, DC-LAMP, TSC403, Dendritic Cell Marker

Product images:

Cryosection of human lung type II pneumocytes stained with purified 109G3 +goat anti-mouse-HRP



IHC staining of human lung frozen section with clone 109G3 (DX0193)