

## Product datasheet for **DDX0193A546-100**

### LAMP3 Mouse Monoclonal Antibody [Clone ID: 109G3]

#### Product data:

|                     |  |
|---------------------|--|
| Product Type:       | Primary Antibodies   |
| Clone Name:         | 109G3  |
| Applications:       | IF   |
| Recommend Dilution: | <b><u>DDX0193P-50 / DDX0193P-100 Purified:</u></b> FACS intracellular, ImmunoHistoChemistry frozen sections.<br><b><u>DDX0193A488-50 / DDX0193A488-100</u></b> Alexa-fluor®488: FACS intracellular, Immunofluorescence.<br><b><u>DDX0193A546-50 / DDX0193A546-100</u></b> Alexa-fluor®546: Immunofluorescence.<br><b><u>DDX0193A647-50 / DDX0193A647-100</u></b> Alexa-fluor®647: FACS intracellular.<br><b><u>DDX0193B-50 / DDX0193B-100</u></b> Biotin (on request): FACS intracellular, ImmunoHistoChemistry frozen sections. |
| Reactivity:         | Human  |
| Host:               | Mouse  |
| Isotype:            | IgG1   |
| Clonality:          | Monoclonal   |
| Immunogen:          | Human DC-LAMP alkaline phosphatase fusion protein.   |
| Specificity:        | Human DC-LAMP (epitope in intracytoplasmic domain).  |
| Formulation:        | <b><u>Purified:</u></b> 100 µg in 200µl / 50 µg in 100 µl Tris-NaCl pH 8.<br><b><u>Coupled:</u></b> 100 µg in 200µl / 50 µg in 100 µl PBS 50% glycerol<br>Label: Alexa Fluor 546   |
| Concentration:      | 0.5 mg/ml  |
| Purification:       | QMA Hyper D ion exchange chromatography  |
| Conjugation:        | Alexa Fluor 546  |
| Gene Name:          | lysosomal associated membrane protein 3  |
| Database Link:      | <a href="#">Entrez Gene 27074 Human</a>  |



[View online »](#)

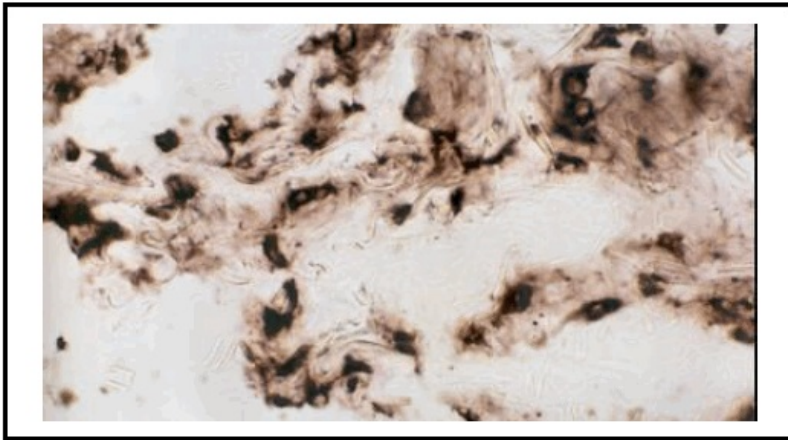
**Background:**

The dendritic cell lysosomal-associated membrane protein (DC-LAMP)/CD208 is a type I integral transmembrane glycoprotein mostly homologous to CD68, of about 45 kDa in the mouse and 90 kDa in human (due to extensive glycosylation), with a bipartite C-terminal structure divided by a serine/proline rich region, a transmembrane domain and a conserved tyrosine-based lysosomal targeting motif in its cytoplasmic tail. Initially cloned as a specific marker of human mature dendritic cells (DCs), DC-LAMP has been subsequently shown to be expressed in alveolar type II pneumocytes. In both cell types, the molecule is found in the limiting membrane of intracellular multi-lamellar bodies, known as MIIC (MHC class II compartments) in human mature DC and as lung surfactant-containing lamellar bodies in type II pneumocytes. In the latter cell type, DC-LAMP expression is also detected at the cell surface.

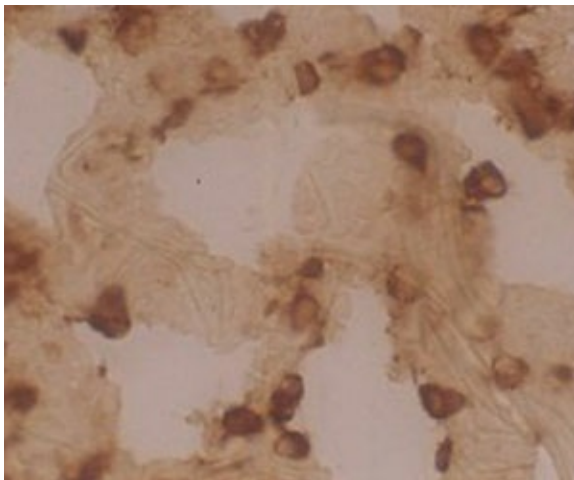
*(de Saint-Vis B et al, 1998 ; Immunity ; 9: 325-336)*

**Synonyms:**

DCLAMP, DC-LAMP, TSC403, Dendritic Cell Marker

**Product images:**

Cryosection of human lung type II pneumocytes stained with purified 109G3 +goat anti-mouse-HRP



IHC staining of human lung frozen section with clone 109G3 (DX0193)