

## Product datasheet for **DDX0192A488-100**

### Lamp3 Rat Monoclonal Antibody [Clone ID: 1006F7.05]

#### Product data:

Product Type:	Primary Antibodies
Clone Name:	1006F7.05
Applications:	FC, IF
Recommend Dilution:	<b><u>DDX0192P-50 / DDX0192P-100 Purified</u></b> : Surface and Intra Flow cytometry, IHC, IF. <b><u>DDX0192A488-50 / DDX0192A488-100 Alexa-fluor®488</u></b> : Surface and Intra Flow cytometry, IF. <b><u>DDX0192A546-50 / DDX0192A546-100 Alexa- fluor®546</u></b> : Surface and Intra Flow cytometry. <b><u>DDX0192A647-50 / DDX0192A647-100 Alexa- fluor®647</u></b> : Surface and Intra Flow cytometry. <b><u>DDX0192B-50 / DDX0192B-100: Biotin (on request)</u></b> : Surface and Intra Flow cytometry, IHC. Usage recommendation: *This monoclonal antibody may be used between 5-20µg/ml. *Optimal dilution should be determined by each laboratory for each application. *Coupled antibody: to maintain RT before use.
Reactivity:	Mouse
Host:	Rat
Isotype:	IgG2a
Clonality:	Monoclonal
Immunogen:	recombinant murine DC-LAMP
Specificity:	Murine DC-LAMP <b>Species cross-reactivity:</b> none.
Formulation:	<b><u>Purified</u></b> : 100 µg in 200µl / 50 µg in 100 µl Tris-NaCl pH 8. <b><u>Coupled</u></b> : 100 µg in 200µl / 50 µg in 100 µl PBS 50% glycerol Label: Alexa Fluor 488
Concentration:	0.5 mg/nml
Purification:	QMA hyper D ion exchange chromatography
Conjugation:	Alexa Fluor 488
Gene Name:	lysosomal-associated membrane protein 3
Database Link:	<a href="#">Entrez Gene 239739 Mouse</a>



[View online »](#)

**Background:**

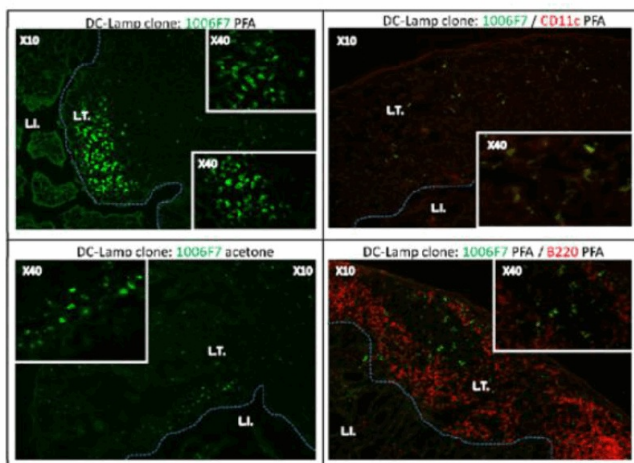
The dendritic cell lysosomal-associated membrane protein (DC-LAMP)/CD208 is a type I integral transmembrane glycoprotein mostly homologous to CD68, of about 45 kDa in the mouse and 90 kDa in human (due to extensive glycosylation), with a bipartite C-terminal structure divided by a serine/proline rich region, a transmembrane domain and a conserved tyrosine-based lysosomal targeting motif in its cytoplasmic tail. DC-LAMP is specifically expressed by human DCs upon activation. However, its mouse counterpart has not been detected in mature DCs. DC-LAMP is constitutively expressed by mouse. Confocal and immunoelectron microscopy have shown that mouse DC-LAMP protein co-localizes with lbn180, a specific marker for the limiting membrane of lamellar bodies that contains lung surfactant protein B.

(Salaun B et al, 2003 ; *Eur. J. Immunol.*, 33 :9, 2619-29 ; Salaun B et al, 2004 ; *Am. J. Pathol.*, 164 :3, 861-71 ; Rochereau N et al, *Vaccine*, 2011).

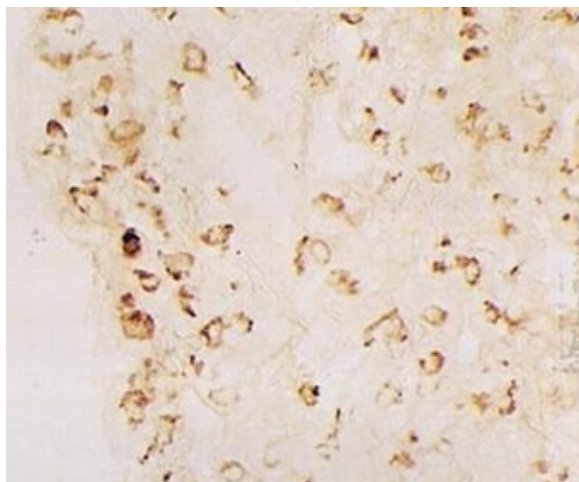
**Synonyms:**

DCLAMP, DC-LAMP, TSC403, Dendritic Cell Marker

**Product images:**



Immunostaining of murine intestine cryosections fixed with Acetone or PFA.  
IL: intestinal lumen; LT: lymphoid tissue



IHC staining of mouse lung frozen section with clone 1006F7 (DX0192)