

Product datasheet for **DDX0191P-100**

LAMP3 Rat Monoclonal Antibody [Clone ID: 1010E1.01]

Product data:

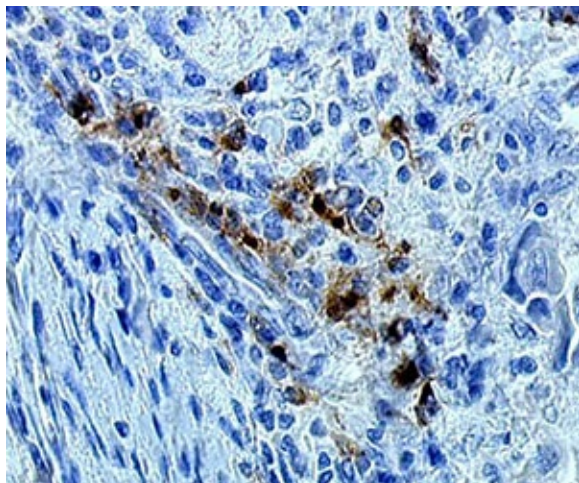
Product Type:	Primary Antibodies
Clone Name:	1010E1.01
Applications:	IHC
Recommend Dilution:	IHC paraffin (formol, Bouin) in human
Reactivity:	Canine, Feline, Human, Mouse, Sheep
Host:	Rat
Isotype:	IgG2a
Clonality:	Monoclonal
Immunogen:	recombinant murine DC LAMP
Specificity:	murine DC-LAMP (epitope in intracytoplasmic domain). Species cross-reactivity: human, cat, dog, sheep, mouse.
Formulation:	Tris-NaCl pH 8 State: Purified
Concentration:	0.5 mg/ml
Purification:	QMA Hyper D ion exchange chromatography
Gene Name:	lysosomal associated membrane protein 3
Database Link:	Entrez Gene 27074 Human
Background:	The dendritic cell lysosomal-associated membrane protein (DC-LAMP)/CD208 is a type I integral transmembrane glycoprotein mostly homologous to CD68, of about 45 kDa in mouse and 90 kDa in human (due to extensive glycosylation), with a bipartite C-terminal structure divided by a serine/proline rich region, a transmembrane domain and a conserved tyrosine-based lysosomal targeting motif in its cytoplasmic tail. Initially cloned as a specific marker of human mature dendritic cells (DCs), DC-LAMP has been subsequently shown to be expressed in alveolar type II pneumocytes. In both cell types, DC-LAMP is found in the limiting membrane of intracellular multi-lamellar bodies, known as MIIC (MHC class II compartments) in human mature DC and as lung surfactant-containing lamellar bodies in type II pneumocytes. In the latter cell type, DC-LAMP expression is also detected at the cell surface. (<i>de Saint-Vis B et al, 1998 ; Immunity ; 9: 325-336 ; Salaun B et al, 2003 ; Eur. J. Immunol., 33 :9, 2619- 29 ; Salaun B et al, 2004 ; Am. J. Pathol., 164 :3, 861-71</i>)



[View online »](#)

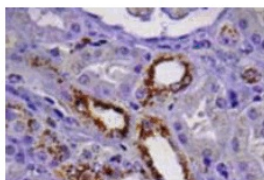
Synonyms: DCLAMP, DC-LAMP, TSC403, Dendritic Cell Marker

Product images:

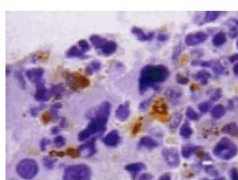


IHC staining of human lymph node paraffin section with clone 1010E1 (DX0191)

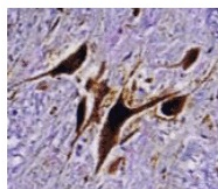
kidney



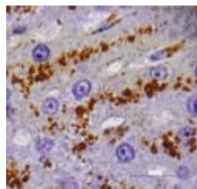
bone marrow



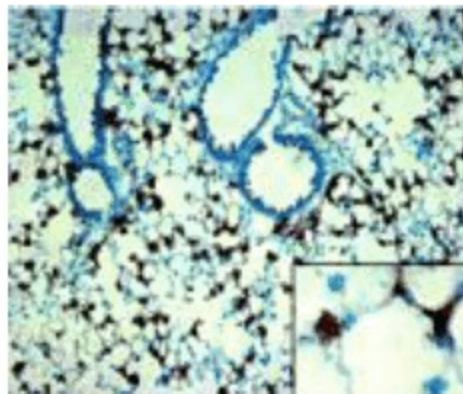
central nervous system



liver



IHC staining of canine tissues



IHC on mouse lung cryosection