

Product datasheet for **DDX0190A647-100**

LAMP3 Mouse Monoclonal Antibody [Clone ID: 104G4]

Product data:

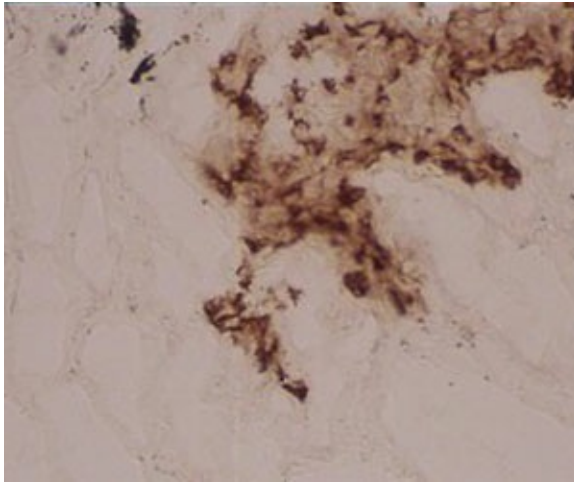
Product Type:	Primary Antibodies
Clone Name:	104G4
Applications:	FC
Recommend Dilution:	Intracyto Flow cytometry
Reactivity:	Human, Sheep
Host:	Mouse
Isotype:	IgG1
Clonality:	Monoclonal
Immunogen:	human DC-LAMP alkaline phosphatase fusion protein
Specificity:	human DC-LAMP (epitope in intracytoplasmic domain). Species cross-reactivity: sheep.
Formulation:	PBS 50% glycerol Label: Alexa Fluor 647
Concentration:	0.5 mg/ml
Conjugation:	Alexa Fluor 647
Gene Name:	lysosomal associated membrane protein 3
Database Link:	Entrez Gene 27074 Human
Background:	The dendritic cell lysosomal-associated membrane protein (DC-LAMP)/CD208 is a type I integral transmembrane glycoprotein mostly homologous to CD68, of about 45 kDa in mouse and 90 kDa in human (glycosylation), with a bipartite C-terminal structure divided by a serine/proline rich region, a transmembrane domain and a conserved tyrosine-based lysosomal targeting motif in its cytoplasmic tail. Initially cloned as a specific marker of human mature dendritic cells (DCs), DC-LAMP has been subsequently shown to be expressed in alveolar type II pneumocytes. In both cell types, the molecule is found in the limiting membrane of intracellular multi-lamellar bodies, known as MIIC (MHC class II compartments) in human mature DCs and as lung surfactant-containing lamellar bodies in type II pneumocytes. In the latter cell type, DC-LAMP expression is also detected at the cell surface. (<i>de Saint-Vis B et al, 1998 ; Immunity ; 9:325-336</i>)



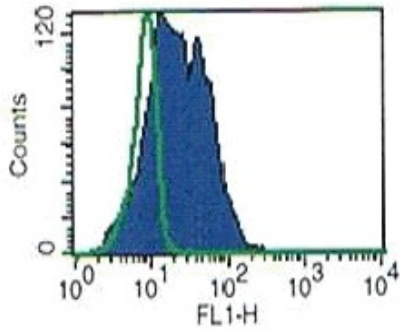
[View online »](#)

Synonyms: DCLAMP, DC-LAMP, TSC403, Dendritic Cell Marker

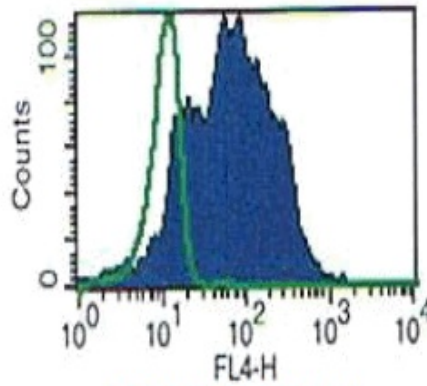
Product images:



IHC staining of human lung frozen section with clone 104G4 (DX0190)



104.G4-A488



104.G4-A647

Intracellular FACS staining of human monocytes cultured 24h with GM-CSF, IL4, LPS