

Product datasheet for **DDX0141A647-100**

CD40L (CD40LG) Mouse Monoclonal Antibody [Clone ID: LL2]

Product data:

Product Type:	Primary Antibodies
Clone Name:	LL2
Applications:	FC, IF
Recommend Dilution:	FACS surface, ImmunoFluorescence. *This monoclonal antibody may be used between 5-20 µg/ml.
Reactivity:	Human
Host:	Mouse
Isotype:	IgG1
Clonality:	Monoclonal
Immunogen:	Chimeric Human CD40L-Ig-transfected COS-7 cells.
Specificity:	human CD40L.
Formulation:	100 µg in 200 µl / 50 µg in 100 µl PBS 50% glycerol Label: Alexa Fluor 647
Concentration:	0.5 mg/ml
Purification:	QMA Hyper D ion exchange chromatography
Conjugation:	Alexa Fluor 647
Gene Name:	CD40 ligand
Database Link:	Entrez Gene 959 Human



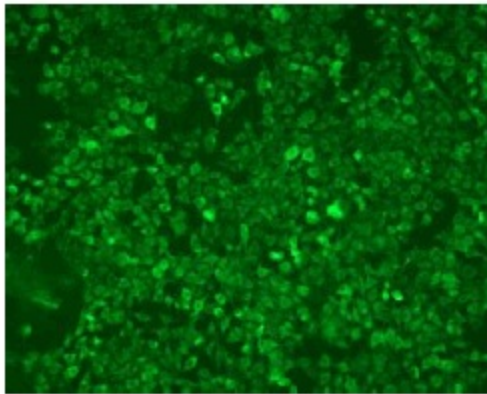
[View online »](#)

Background:

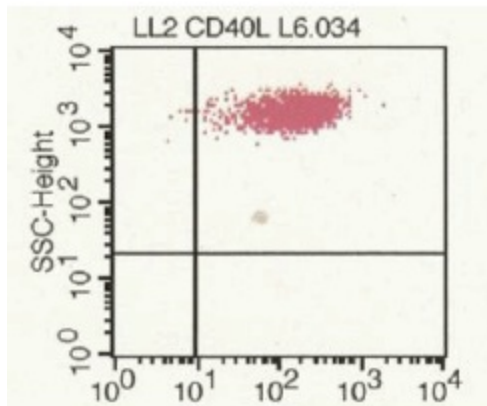
CD40 ligand also known as TRAP, gp39, TNFSF5, is a 261 amino acid type II transmembrane glycoprotein belonging to the TNF superfamily. CD40 ligand is expressed predominantly on activated CD4+ T cells and is also found on other cell types, including NK cells, mast cells, basophils and eosinophils. Genetic alterations in the CD40L results in the absence of a functional molecule on activated T cells and are responsible for the occurrence of X-linked hyper-IgM syndrome. LL2 clone was produced by immunizing mice with L cells transfected with human CD40L. Addition of anti-CD40L mAb LL2 enhanced proliferation of MT9 and FS35 T cell lines in the presence of IL-2 and increased the secretion of IFN- γ by MT9 cells and of IL-10, IL-5 and IL-4 by FS35 cells cultured with IL-2. LL2 completely blocks CD40- CD40L interaction, can mimic T cell-induced CD40 triggering on B cells and activates T cells. (Hermann P et al, 1995, *EJl*, 25 (10), 2972-2977; Razanajaona D et al, 1996, *J Immunol.*, 157(4):1492-8 ; Fournier N et al, 2000 *J Immunol.*, 165: 1197-1209; Henn et al, 2001, *Blood*, 98 (4), 1047-1054).

Synonyms:

CD40 ligand, CD40-L, CD40LG, TNFSF5, TRAP, GP39

Product images:

IF staining of hCD40L-transfected cells with LL2 clone



FACS staining of hCD40L-transfected L cells with LL2 clone