

## Product datasheet for **DDX0140P-100**

### CD40L (CD40LG) Mouse Monoclonal Antibody [Clone ID: LL48]

#### Product data:

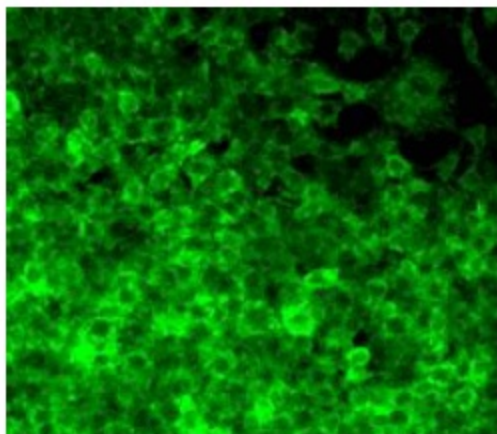
Product Type:	Primary Antibodies
Clone Name:	LL48
Applications:	FC, FN, IF
Recommend Dilution:	<b>Cell culture inhibition in MELR H3, Thymidine uptake proliferative assay</b> <b>Immunofluorescence.</b> <b>Flow cytometry, neutralization of CD40L biological effects.</b> *This monoclonal antibody may be used between 5-20 µg/ml.
Reactivity:	Human
Host:	Mouse
Isotype:	IgG2a
Clonality:	Monoclonal
Immunogen:	Chimeric CD40L-Ig-transfected COS-7 cells.
Specificity:	Human CD40L.
Formulation:	100 µg in 200 µl / 50 µg in 100 µl Tris-NaCl pH 8 State: Purified
Concentration:	0.5 mg/ml
Purification:	QMA Hyper D ion exchange chromatography
Gene Name:	CD40 ligand
Database Link:	<a href="#">Entrez Gene 959 Human</a>
Background:	CD40 ligand also known as TRAP, gp39, TNFSF5, is a 261 amino acid type II transmembrane glycoprotein belonging to the TNF superfamily. CD40 ligand is expressed predominantly on activated CD4+ T cells and is also found on other cell types, including NK cells, mast cells, basophils and eosinophils. Genetic alterations in the CD40L results in the absence of a functional molecule on activated T cells and are responsible for the occurrence of X-linked hyper-IgM syndrome. LL48 clone is a CD40L neutralizing antibody and plays an important role in costimulatory interactions between T and B lymphocytes, and antigen-presenting cells and lymphocytes regulating the immune system at multiple levels. (Tong AW et al, 2001, <i>Clin. Canc. Res.</i> , 7:691-703; Hill A. et al, 1993; <i>Nature</i> , 361:494-503; Péguet-Navarro J. et al, 1995; <i>J. Immunol.</i> , 155:4241-4247).



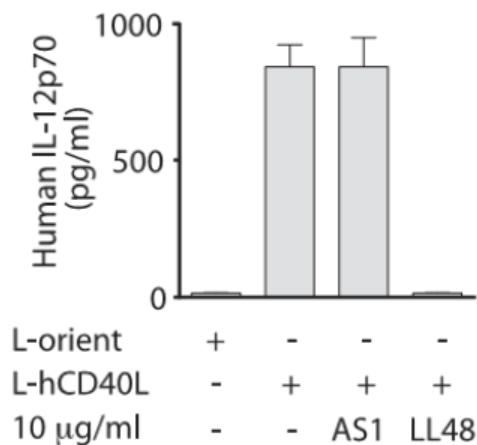
[View online »](#)

Synonyms: CD40 ligand, CD40-L, CD40LG, TNFSF5, TRAP, GP39

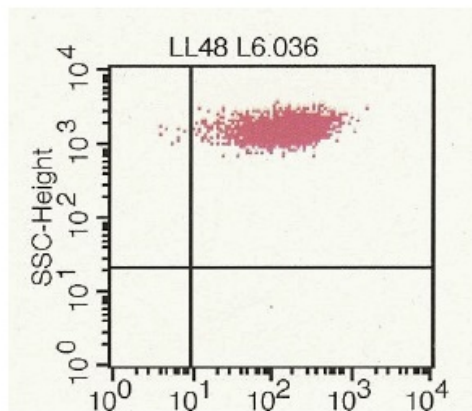
Product images:



IF staining of hCD40L-transfected L cells with LL48 clone



Inhibition of IL12 production by CD40L-stimulated human monocyte-derived DCs by LL48 clone (Stax AM et al, 2008, J Immunol Methods)



FACS staining of hCD40L-transfected L cells with LL48 clone