

## Product datasheet for **DDX0120P-100**

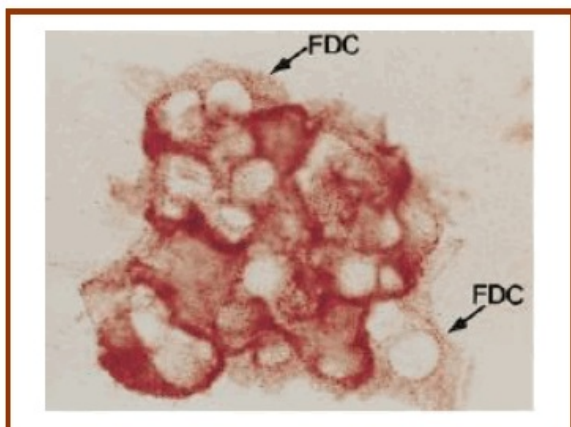
### CD21 (CR2) (CD21L) Mouse Monoclonal Antibody [Clone ID: 7D6]

#### Product data:

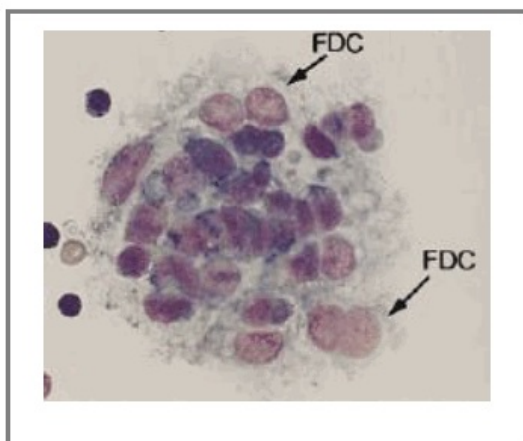
Product Type:	Primary Antibodies
Clone Name:	7D6
Applications:	IHC
Recommend Dilution:	<b>IHC frozen section.</b> <b>Usage recommendation:</b> *This monoclonal antibody may be used between 1-15 µg/ml.
Reactivity:	Human
Host:	Mouse
Isotype:	IgG1
Clonality:	Monoclonal
Immunogen:	enriched-human tonsillar FDCs (follicular dendritic cells)
Specificity:	human follicular dendritic cells
Formulation:	State: Purified State: 100 µg in 200 µl / 50 µg in 100 µl Tris-NaCl pH 8
Concentration:	0.5 mg/ml
Purification:	QMA Hyper D ion exchange chromatography
Gene Name:	complement component 3d receptor 2
Database Link:	<a href="#">Entrez Gene 1380 Human</a>
Background:	An antibody has been generated that specifically recognizes human follicular dendritic cells (FDCs) on the long CR2 / CD21L isoform (CD21L). Follicular dendritic cells represent a cell-type ontogenetically distinct from all other Dendritic Cells (DCs). They are found within B lymphocyte follicles of secondary lymphoid tissue. At the opposite, B lymphocytes selectively express the short CR2 / CD21 lacking exon 10a (CD21S). mAb 7D6 does not recognize CD21 expressed on other cells. (Liu Y.J. et al, 1997; J. Exp. Med.185: 165-170)
Synonyms:	Complement receptor type 2, CR2, C3DR, C3d receptor, EBV Receptor, Dendritic Cell Marker



[View online »](#)

**Product images:**

mAb 7D6 staining on FDC clusters. Slides were incubated with mAb 7D6 and subsequently with a sheep anti-mouse IgG1. The binding of antibody was revealed using APAAP method and developed by Fast red substrate.



Giemsa staining of isolated FDCs clusters.