

## Product datasheet for **DDX0081A647-100**

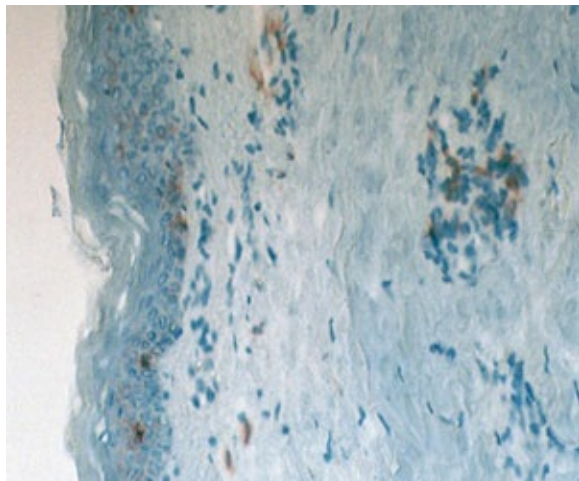
### CD1 (CD1A) Mouse Monoclonal Antibody [Clone ID: 201B5.08]

#### Product data:

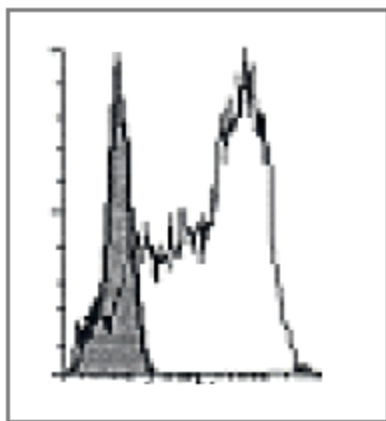
Product Type:	Primary Antibodies
Clone Name:	201B5.08
Applications:	FC
Recommend Dilution:	<b><u>DDX0081A488-50 / DDX0081A488-100 Alexa-fluor®488</u></b> : Surface flow cytometry, IF. <b><u>DDX0081A546-50 / DDX0081A546-100 Alexa- fluor®546 (on request)</u></b> : surface Flow Cytometry. <b><u>DDX0081A647-50 / DDX0081A647-100 Alexa- fluor®647</u></b> : Surface flow cytometry.
Reactivity:	Human, Porcine
Host:	Mouse
Isotype:	IgG1
Clonality:	Monoclonal
Immunogen:	in vitro derived human DCs (GMCSF + TNF $\alpha$ )
Specificity:	Human CD1a (epitope in extracellular domain). <b>Species cross- reactivity:</b> Pig.
Formulation:	Label: Alexa Fluor 647
Concentration:	0.5 mg/ml
Purification:	QMA hyper D ion exchange chromatography
Conjugation:	Alexa Fluor 647
Gene Name:	CD1a molecule
Database Link:	<a href="#">Entrez Gene 909 Human</a>
Background:	CD1 family molecules have structural homologies with MHC class I molecules. They are monomeric proteins of 50 kDa, non-covalently associated with Beta-2-microglobulin. Human CD1a molecules are divided in 2 groups. Group 1 includes CD1a, CD1b, and CD1c, while group 2 consists of the CD1d molecule. CD1a is mainly expressed at the cell-surface and in recycling vesicles. CD1a occurs in Birbeck granules of Langerhans cells and plays a role in presentation of non-peptide antigens. CD1a is expressed in vitro on CD34 <sup>+</sup> -generated DCs and on monocyte-derived DCs. ( <i>Burdin N. et al., 1999, Curr Opin Immunol, 11:326-31</i> ).
Synonyms:	T6/Leu-6, hTa1



[View online »](#)

**Product images:**

IHC staining of human skin frozen section with clone 201B5 (DDX0081)



Surface FACS analysis of CD1a expression on CD34+-derived DCs (day 12 of culture)