

Product datasheet for **DDX0080P-100**

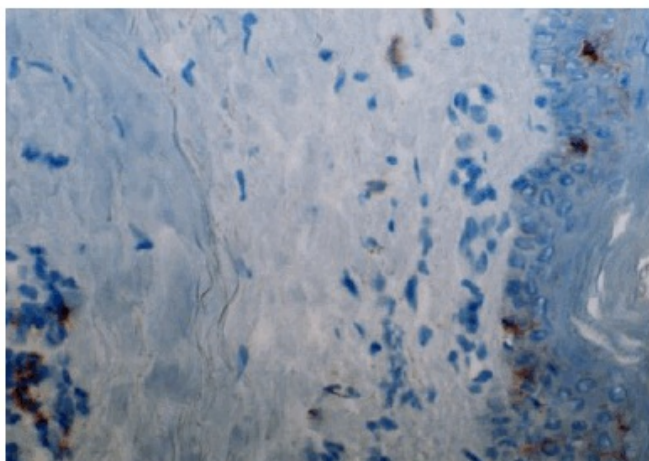
CD1 (CD1A) Mouse Monoclonal Antibody [Clone ID: 214A9.01]

Product data:

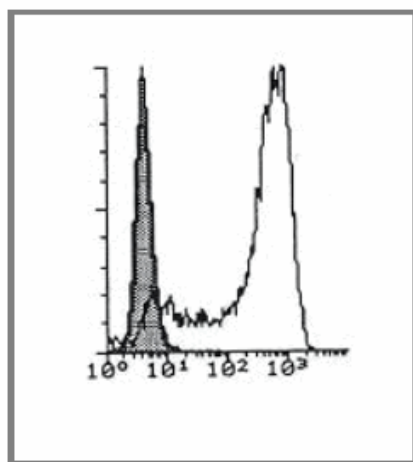
Product Type:	Primary Antibodies
Clone Name:	214A9.01
Applications:	FC, IHC, WB
Recommend Dilution:	Flow Cytometry, IHC cryosection, WB.
Reactivity:	Human
Host:	Mouse
Isotype:	IgM
Clonality:	Monoclonal
Immunogen:	in vitro derived human DCs (GMCSF + TNF α)
Specificity:	human CD1a (epitope in extracellular domain).
Formulation:	100 μ g in 200 μ l / 50 μ g in 100 μ l Tris-NaCl pH 8 State: Purified
Concentration:	0.5 mg/ml
Purification:	QMA Hyper D ion exchange chromatography
Gene Name:	CD1a molecule
Database Link:	Entrez Gene 909 Human
Background:	CD1 family molecules have a homologous structure to MHC class I. They are monomorphic proteins of 50 kDa non-covalently associated with β 2-microglobulin. Human CD1a molecules are divided in 2 groups. Group 1 includes CD1a, CD1b, and CD1c, while group 2 consists of the CD1d molecule. CD1a is mainly expressed at the cell-surface and in recycling vesicles. CD1a occurs in Birbeck's granules of Langerhans cells and plays a role in presentation of non-peptide antigens. CD1a is expressed in vitro on CD34+ generated DCs and on monocyte-derived DCs. (Burdin N. et al, 1999 ; Curr. Opin. Immunol., 11:326-31 ; Valladeau J. et al, 1999; Immunity, 12:71-81)
Synonyms:	T6/Leu-6, hTa1



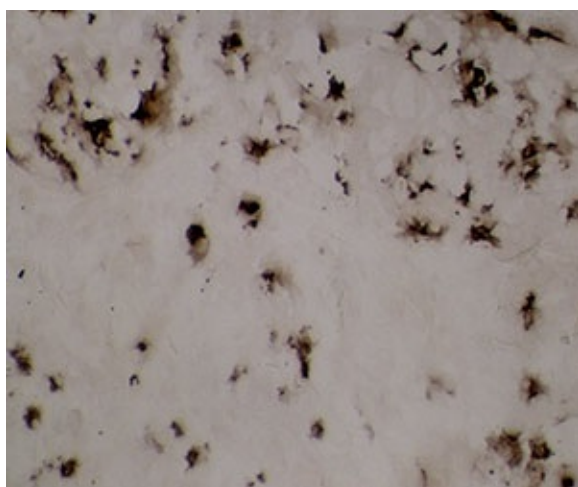
[View online »](#)

Product images:

Human skin cryosection stained with 214A9



Facs staining of in vitro-derived DCs with 214A9.01



IHC staining of human lung cancer frozen section with clone 214A9 (DDX0080)