

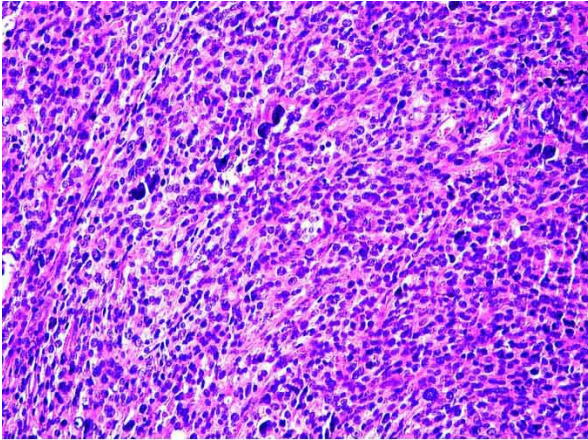
## Product datasheet for **CS815511**

### PD-L1 Positive IHC Control Slides

#### Product data:

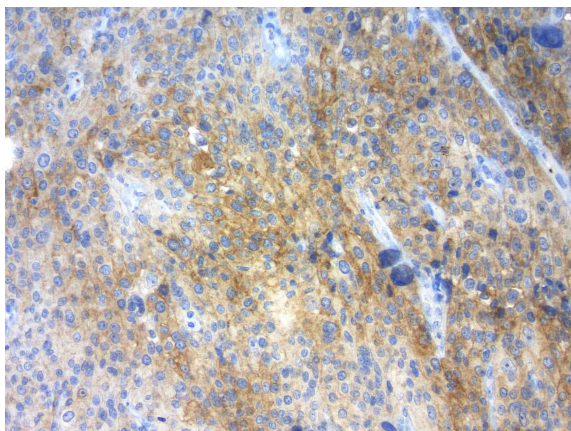
Product Type:	IHC Control Slides (Phase II)
Name:	PD-L1 Positive
Description:	PD-L1 positive tissue 4um section mounted on unstained slide. Available in sets of 2 or 5 slides.

#### Product images:



Hematoxylin and eosin stain of melanoma.





Immunohistochemical staining of FFPE melanoma: using heat-induced epitope retrieval HIER ACCEL buffer pH8.7 at 120C for 3min, mouse monoclonal antibody CAT# - CF810753 anti-PDL1 clone OT13E9 was used at 1:50. Membrane staining seen in tumor cells of melanoma.